

THE CABLE TIE GUN ^{ks5}

NEW PROFESSIONAL SYSTEM

**ELECTRICITY • SOLAR PANEL • AIR CONDITIONING • HEATING • MAINTENANCE
GARAGE • MECHANICAL • INDUSTRIAL / AGRICULTURE • LANDSCAPE • GARDEN CENTER**

NEW
with **NEW**
CLAMPING HANDLE



PATENTED

YESTERDAY



**STOP USING
TRADITIONAL CABLE TIES**

TODAY



BLACK (UV) / WHITE



**SPOOLS FOR
STRAPPING**



LOCKING CLIPS



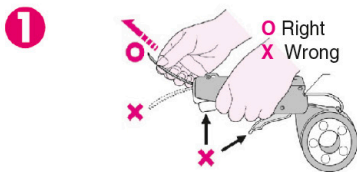
PLUGS

- **MAKE** all your **CABLING** without **DIAMETER LIMITATION**
- **AVOID** the **USE** of **TRADITIONAL CABLING** in **DIFFERENT SIZES**
- **NO MORE** **CABLE TIE WASTE**
- **ECONOMICAL, EASY, FAST** and **RELIABLE**

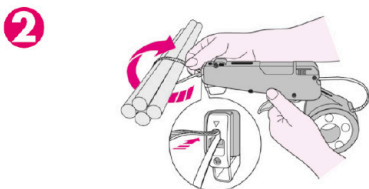


Kelly's 5 DISTRIBUTION LLC
LAS VEGAS, NV 89103
AMIGOS V COMPLEX
4490 DELANCEY DRIVE, SUITE 7
www.ks5.us info@ks5.us
TEL: 702 413 6200 FAX: 702 413 6201

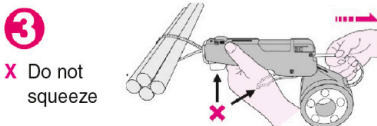
Instructions for use



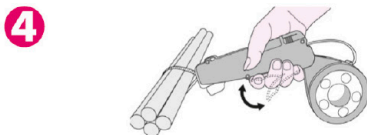
Pull the strap out of the spool and insert it into the barrel. The strap will appear through the locking clip, curving upwards. DO NOT squeeze the cutter button or the trigger during this operation.



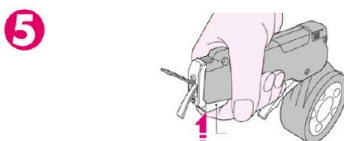
Wrap the strap around the item to be tied with the serrated surface outwards. Insert the end of the strap into the locking clip until an audible "click" is heard.



To tighten, pull the strap towards you from the back of the barrel. DO NOT squeeze the trigger or the cutter button during this operation.

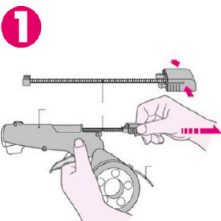


To complete the tightening operation squeeze the tightening trigger a number of times.

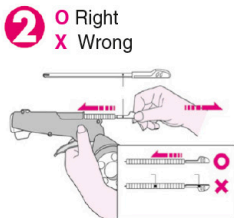


Cut the cable tie by pushing firmly on the cutter button and release.

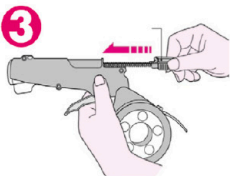
Loading the locking clips



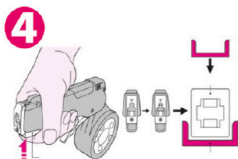
Pull out the spring feed by squeezing both sides of the locking clip.



Insert the magazine of locking clips fully, and then remove the spine. The locking clips are then in place.

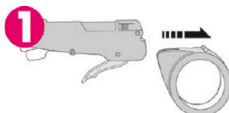


Replace the spring feed.

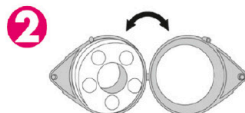


Before use, squeeze the cutter button to position the first locking clip.

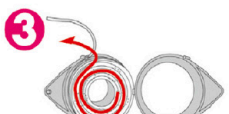
Loading the strap



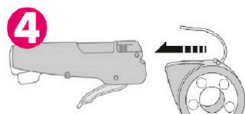
Remove the strap holder from the barrel by pulling firmly.



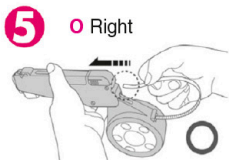
Open up the strap holder and insert the spool.



Pull out the strap with the serrated surface uppermost.



Re-attach the spool holder to the barrel.



Insert the strap with the smooth side now uppermost into the barrel.

