



**READ AND SAVE THESE INSTRUCTIONS**

## ⚠ WARNING

Do not use sharp instruments to press touch screen. Only use your fingertips.

## TABLE OF CONTENTS

<b>FEATURES</b> .....	2
<b>DISPLAY OVERVIEW</b> .....	3
Home Screen.....	3
Main Menu.....	3
<b>WI-FI SETUP</b> .....	4
iOS.....	4
Android.....	7
<b>CONTROL OPERATION</b> .....	10
Select System Mode .....	10
Change Temperature Setpoint .....	10
Select Fan Setting .....	11
Set Time and Date .....	12
<b>ZONE/SENSOR OPERATION</b> .....	14
Zone Control .....	14
Sensor Control .....	14
<b>SCHEDULE AND HOLDS</b> .....	15
Understanding Schedules .....	15
Changing Schedules .....	16
Schedule Holds .....	19
Temporary Hold .....	19
Permanent Hold .....	19
Heat Blast® .....	20
Away .....	20
<b>STATUS</b> .....	21
<b>ALERTS</b> .....	22
Maintenance Reminders.....	24
<b>WEATHER</b> .....	25
<b>INDOOR AIR QUALITY FUNCTIONS</b> .....	26
Humidity Control .....	26
Automatic Mode.....	26
Manual Mode .....	27
Dehumidification .....	27
Event Based™ Air Cleaning .....	28
Fresh Air.....	29
<b>USER PREFERENCES</b> .....	30
Away Button.....	31
Lockouts.....	33
Temperature Scale.....	34
Schedule Settings .....	35
<b>CLEAN SCREEN</b> .....	36
<b>WI-FI MAINTENANCE AND TROUBLESHOOTING</b> .....	37
Wi-Fi Status Indicator .....	37
Clearing Router Settings.....	38
Removing the System from a User Account .....	39
Disabling the Wi-Fi Radio .....	40
<b>LIMITED WARRANTY</b> .....	41

## FEATURES

- Temperature control.
- Remote access and control over Wi-Fi.
- Indoor air quality control.
  - Humidification automatic or manual control.
  - Dehumidification.
  - Event-Based™ air cleaning.
  - Ventilation with temperature and humidity limits.
- Heat Blast® raises the room temperature 3°F to 5°F.
- One touch Away.
- Large touch screen with adjustable backlight.
- 7 day programmability.
- Displays room temperature, room humidity, temperature setting, and optional outdoor temperature.
- Air filter, humidifier, dehumidifier, fresh air and HVAC service reminders.
- Programmable fan control with fan circulation mode.
- Easy to use temperature control can override program schedule at any time.
- Progressive recovery ensures proper temperature at the start of a program event.

# DISPLAY OVERVIEW

## HOME SCREEN

CURRENT DATE AND TIME (AUTOMATICALLY UPDATED IF CONNECTED TO INTERNET)

WI-FI INDICATOR (STROBES IN SETUP MODE)

HEAT SETTING

COOL SETTING

ZONE SELECTION

CURRENT SCREEN RELATED HELP

ROOM TEMPERATURE & HUMIDITY

HEATING AND COOLING EQUIPMENT STATUS

OUTDOOR TEMPERATURE

FAN MODE SELECTION

SYSTEM MODE SELECTION

HOLD MENU & STATUS

AWAY MODE & STATUS

HEAT BLAST MODE & STATUS

DETAILED EQUIPMENT STATUS

ACTIVE ALERTS & ALERT SETTINGS

WEATHER FORECAST & ALLERGY REPORT

MAIN MENU

HUMIDIFIER AND OR DEHUMIDIFIER INDOOR AIR QUALITY SCREEN & SIMPLE STATUS

AIR CLEANING INDOOR AIR QUALITY SCREEN & SIMPLE STATUS

FRESH AIR INDOOR AIR QUALITY SCREEN & SIMPLE STATUS

Labels on screen: Aprilaire, 5:54 PM, Fri, Oct 5, Wi-Fi, Zone 1, Help, Menu, 75° 25% RH Heating Indoor, 70° HEAT, 78° COOL, Humidity Control Off, Air Cleaning On, Fresh Air On, FAN (AUTO), MODE (AUTO), HOLD (SCHEDULE), AWAY, HEAT BLAST, STATUS, ALERTS (2), WEATHER.

**NOTE:** SCREEN BRIGHTENS AFTER FIRST TOUCH.

Display may differ depending on equipment/options installed.

## MAIN MENU

Touch **Menu** from the home screen to access the Menu screen. The Menu screen allows access to all control settings.

SET DATE & TIME

SET SCREEN BRIGHTNESS AND SCREEN SAVER

SET SCHEDULE

CONNECT TO WI-FI NETWORKS

RETURN TO THE HOME SCREEN FROM THE CURRENT SCREEN

TEMPERATURE SCALE, LOCKOUTS, AWAY MODE SETTING, SCHEDULE SETTINGS

VIEW CONTRACTOR INFORMATION

CLEAN DISPLAY

Labels on screen: Aprilaire, Menu, Home, Clock And Date, User Preferences, Display Settings, Contractor Info, Schedule, Clean Screen, Wi-Fi Settings, Back.

## WI-FI SETUP – iOS

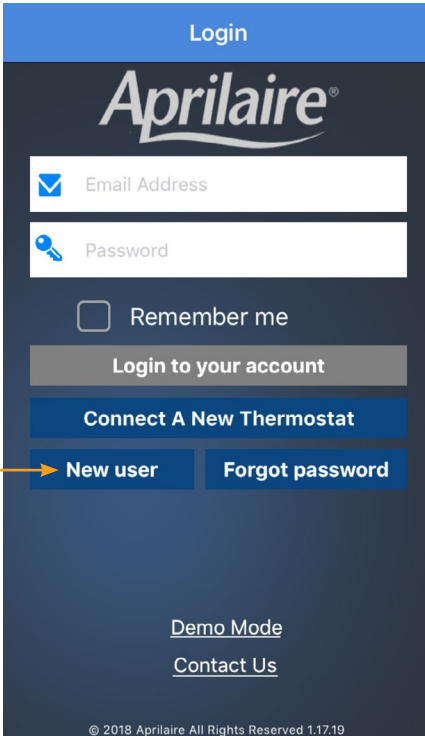
### iOS DOWNLOAD THE APP

1. Search and install the **Aprilaire Wi-Fi Thermostat App** from the App Store.

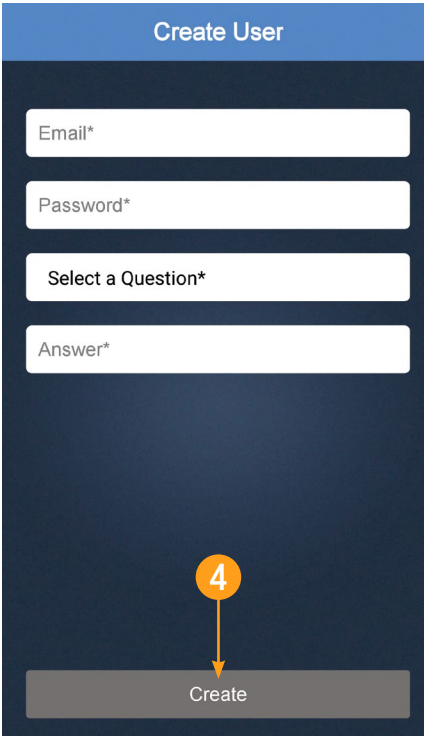


### iOS CREATE A NEW APRILAIRE ACCOUNT

2. Open the app on your device.
3. Tap **New User**.
4. Fill out the form and tap **Create**.
5. A confirmation email will be sent to you. Click the confirmation link in the email to complete the registration. If you do not receive the email, check your junk mail folder.



3



4

# WI-FI SETUP – iOS

## iOS CONNECT YOUR WI-FI THERMOSTAT TO YOUR HOME NETWORK

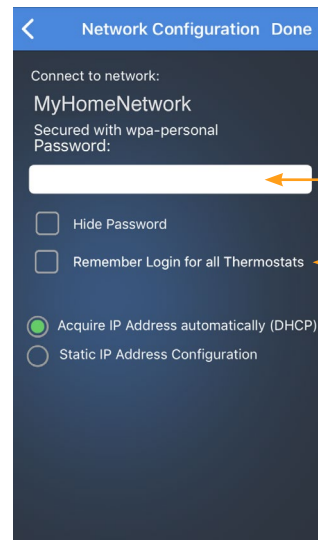
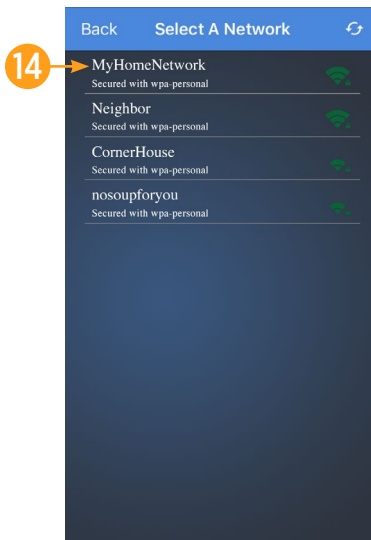
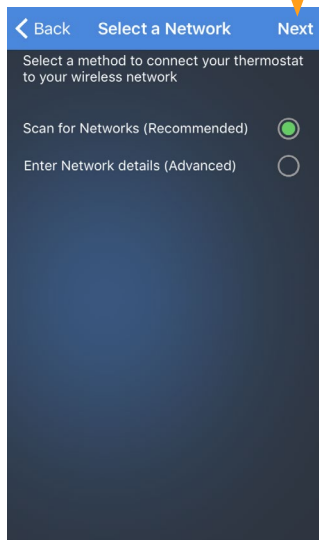
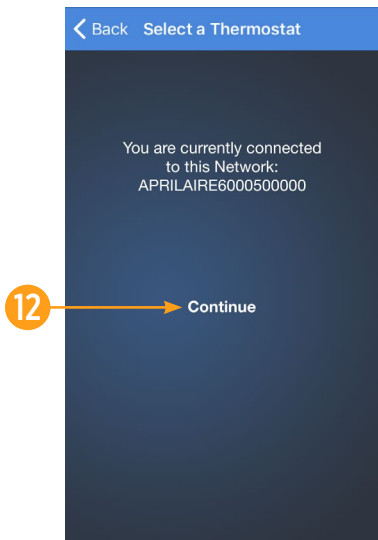
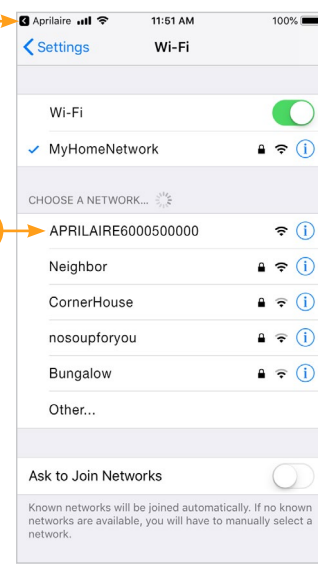
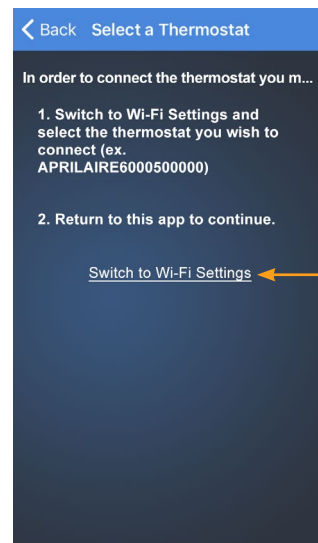
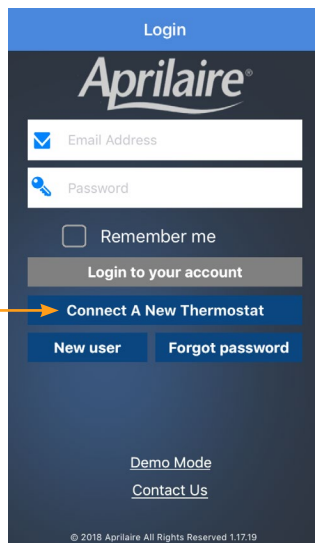
6. Confirm your thermostat is in Wi-Fi setup mode. The signal indicator will be strobing.
7. Open the app and select **Connect a New Thermostat** from the Login screen. If you have already logged in, select **Connect a New Thermostat** from the Main Menu.
8. Select **Switch to Wi-Fi Settings**.
9. Select **Wi-Fi**.
10. A Wi-Fi network including “APRILAIRE” in the title should appear in your list of network options. Tap that network (thermostat) to proceed. **Note:** This step may take up to one minute to complete.
11. Return to the Aprilaire app by selecting **Aprilaire** in the top left corner.
12. Press **Continue**.

### Select your home network.

13. Tap **Next** to scan for your home network.
14. Select your home network from the list.

### Connecting to your home network.

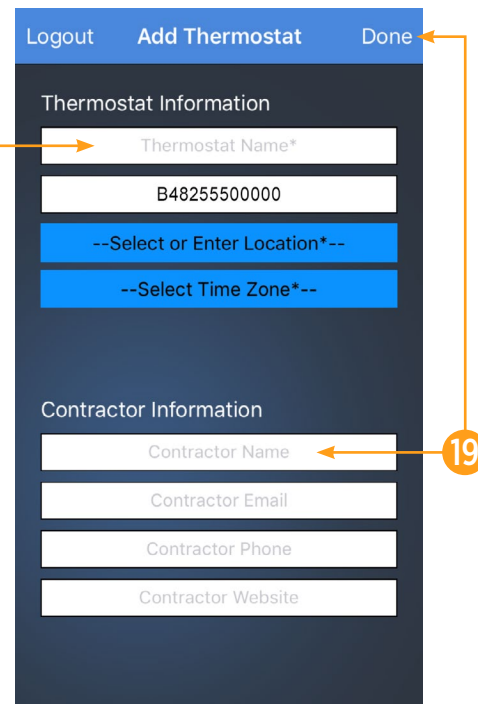
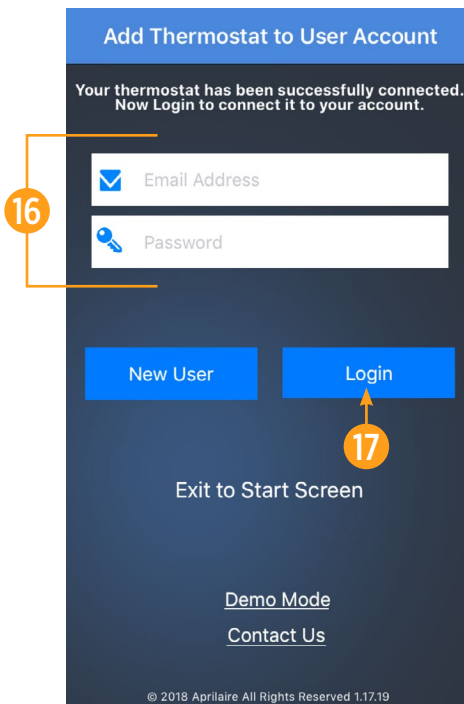
15. Enter the password to your home Wi-Fi network.
16. If you are connecting multiple thermostats to the same network, select **Remember Login for all Thermostats**.
17. Tap **Done**.



# WI-FI SETUP – iOS

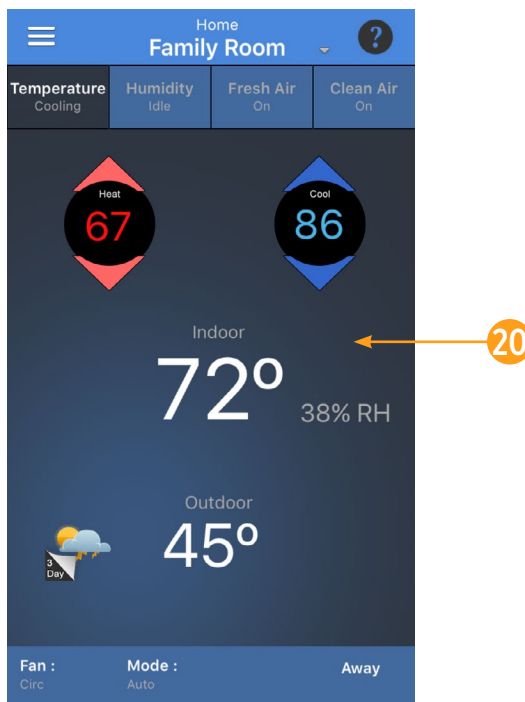
## iOS ADD THERMOSTAT TO USER ACCOUNT

- 16. Enter your Email Address and Password.
- 17. Tap **Login**. The MAC ID for the thermostat will be filled in the box. Do not change it.
- 18. Enter a name for your thermostat (i.e. Office, Den, Kitchen), thermostat location (i.e. House, Cabin, Cottage), Zip Code and Time Zone.
- 19. If you know your HVAC contractor's contact information, enter it and then tap **Done**.
- 20. **Congratulations!** You have successfully registered your thermostat. You can now access and control your thermostat from your mobile device.



## ADDITIONAL RESOURCES

Visit [my.aprilaire.com](http://my.aprilaire.com) for additional app instructions.



## WI-FI SETUP – Android

### Android DOWNLOAD THE APP

1. Search and install the **Aprilaire Wi-Fi Thermostat App** from Google Play.



Aprilaire



### Android CREATE A NEW APRILAIRE ACCOUNT

2. Open the app on your device.
3. Tap **New User**.
4. Fill out the form and tap **Create**.
5. A confirmation email will be sent to you. Click the confirmation link in the email to complete the registration. If you do not receive the email, check your junk mail folder.

The screenshot shows the "Login" screen of the Aprilaire app. At the top, it says "Login" and "Aprilaire". Below the logo are two input fields: "Email Address" and "Password". There is a checkbox labeled "Remember me". Below these are three buttons: "Login to your account", "Connect A New Thermostat", and "New User". The "New User" button is highlighted with a blue circle and an arrow labeled "3". At the bottom, there are links for "Demo mode" and "Contact Us". The footer text reads "© 2018 Aprilaire All Rights Reserved 1.17.21".

The screenshot shows the "Create User" screen of the Aprilaire app. At the top, it says "Create User". Below the title are two input fields: "Email\*" and "Password\*". At the bottom, there is a "Create" button, which is highlighted with a blue circle and an arrow labeled "4".

# WI-FI SETUP – Android

## Android CONNECT YOUR WI-FI THERMOSTAT TO YOUR HOME NETWORK

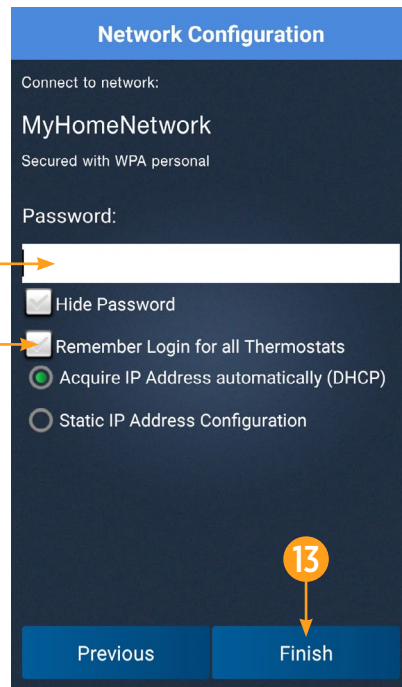
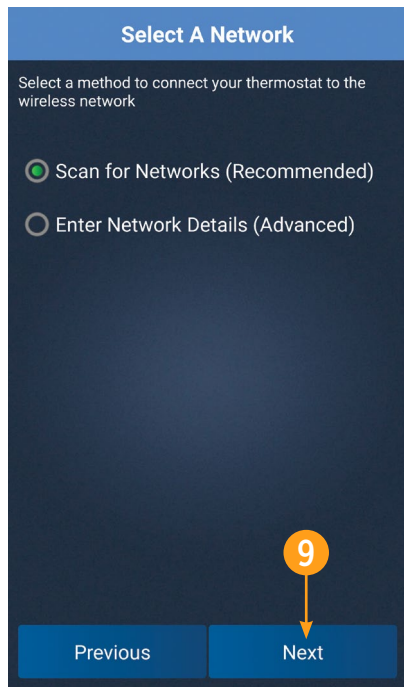
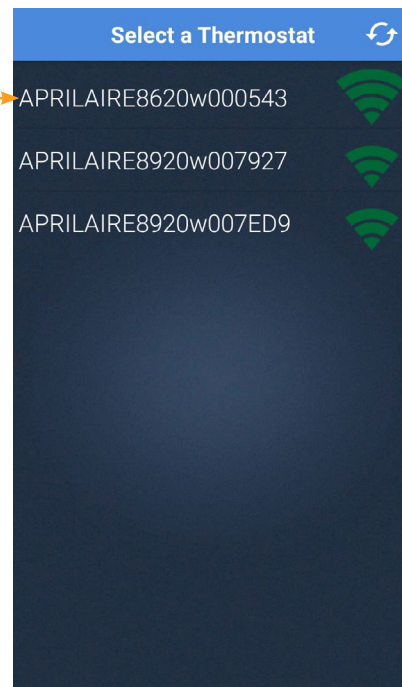
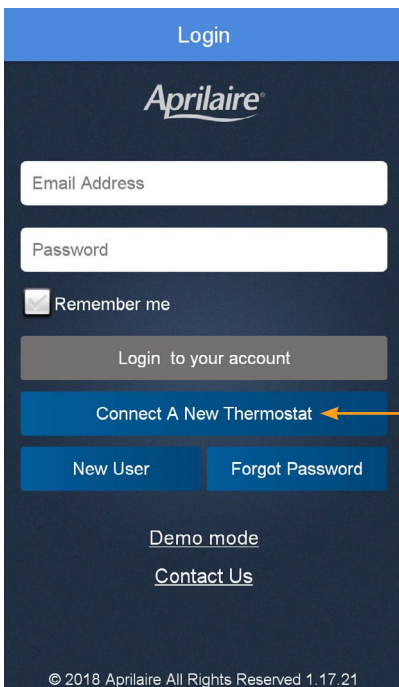
6. Confirm your thermostat is in Wi-Fi setup mode. The signal indicator will be strobing.
7. Open the app and select **Connect a New Thermostat** from the Login screen. If you have already logged in, select **Connect a New Thermostat** from the Main Menu.
8. A list with available thermostats will appear on the screen. Select the thermostat you wish to connect to your network.

### Select your home network.

9. Tap **Next** to scan for your home network.
10. Select your home network from the list.

### Connecting to your home network.

11. Enter the password to your home Wi-Fi network.
12. If you are connecting multiple thermostats to the same network, select **Remember Login for all Thermostats**.
13. Tap **Finish**.





## WI-FI SETUP – Android

### Android ADD THERMOSTAT TO USER ACCOUNT

13. Enter your Email Address and Password.
14. Tap **Login**. The MAC ID for the thermostat will be filled in the box. Do not change it.
15. Enter a name for your thermostat (i.e. Office, Den, Kitchen), thermostat location (i.e. House, Cabin, Cottage), Zip Code and Time Zone.
16. If you know your HVAC contractor's contact information, enter it and then tap **Done**.
17. **Congratulations!** You have successfully registered your thermostat. You can now access and control your thermostat from your mobile device.

Add Thermostat to User Account

Your thermostat has been successfully connected. Now Login to connect it to your account

Email Address

Password

Login New User

Exit to Start Screen

Logout Add Thermostat Done

thermostat name\*

B48255500000

Location Name\*

Zip Code\*

Select a Time Zone

Contractor name

Contractor email

Contractor phone

Contractor website

### ADDITIONAL RESOURCES

Visit [my.aprilaire.com](http://my.aprilaire.com) for additional app instructions.

Home Family Room ?

Temp Cooling Humidity Idle Fresh Air Idle Air Clean On

Heat 67 Cool 86

Indoor 72° 38% RH

Outdoor 45°

Fan: Mode: Away

Circ Auto

## CONTROL OPERATION

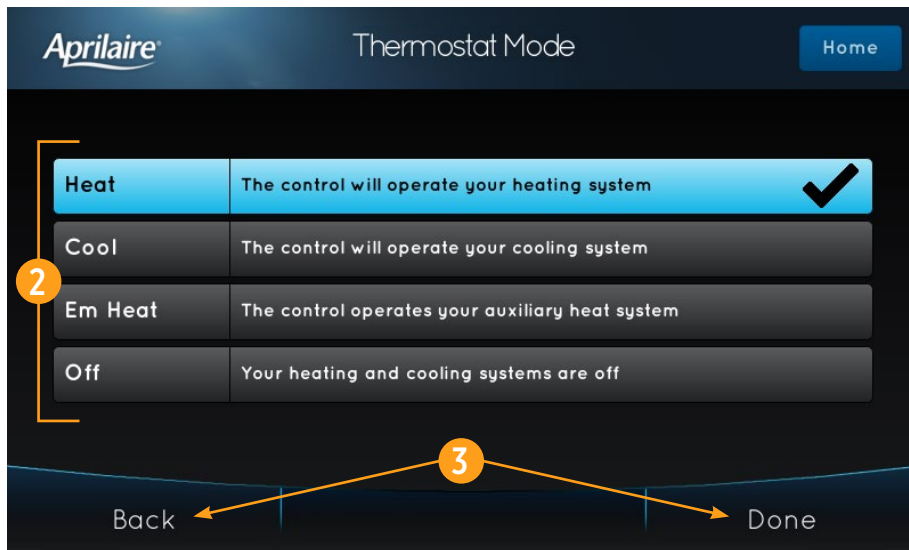
### SELECT SYSTEM MODE

1. Touch **MODE** to open the Thermostat Mode screen.



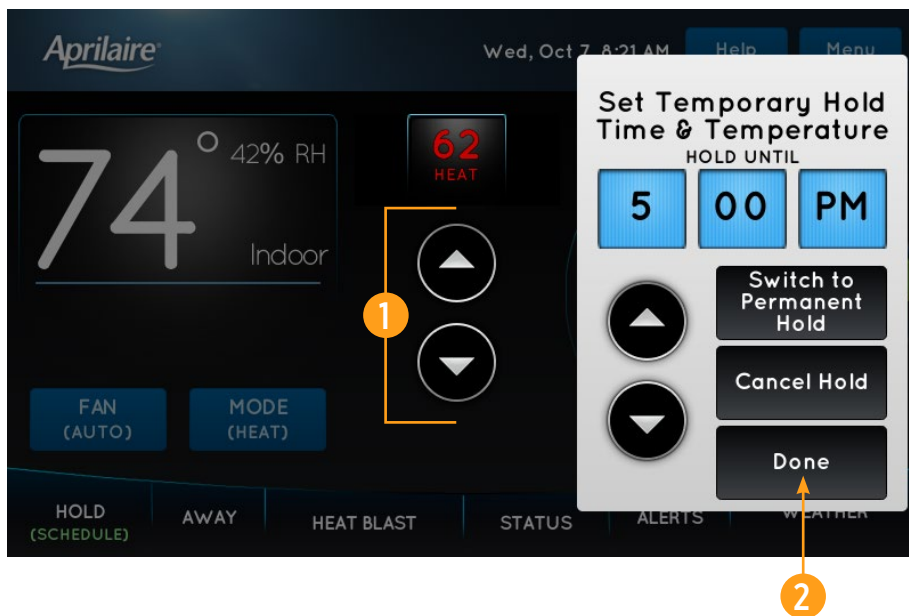
2. Select the desired mode.
3. Touch **Done** to save any changes. Touch **Back** to discard your changes. The control will automatically discard your changes if one minute elapses without touching **Done**.

**Note:** **Em Heat** (Emergency Heat) is only applicable to heat pump installations.



### CHANGE TEMPERATURE SETPOINT

1. Touch the ▲ or ▼ arrows to adjust the temperature setpoint. The Set Temporary Hold pop-up will appear.
  2. Touch **Done** to save your changes.
- See page 18 for information on temporary and permanent holds.



## CONTROL OPERATION

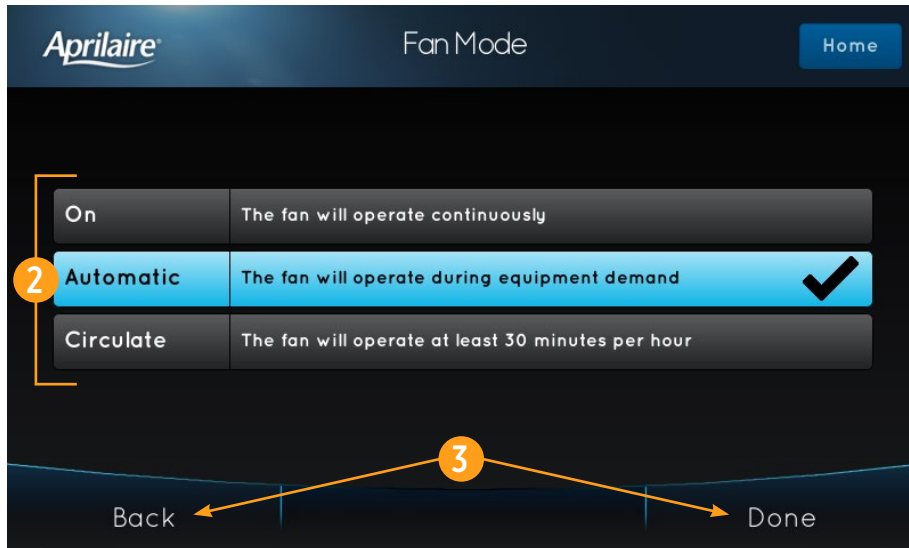
### SELECT FAN SETTING

When the fan mode is changed during a scheduled event, it remains in that mode until the next event starts. To learn about scheduled events, see pages 14-17.

1. Touch **FAN** to open the Fan Mode screen.



2. Select the desired mode.
3. Touch **Done** to save any changes. Touch **Back** to discard your changes. The control will automatically discard your changes if one minute elapses without touching **Done**.



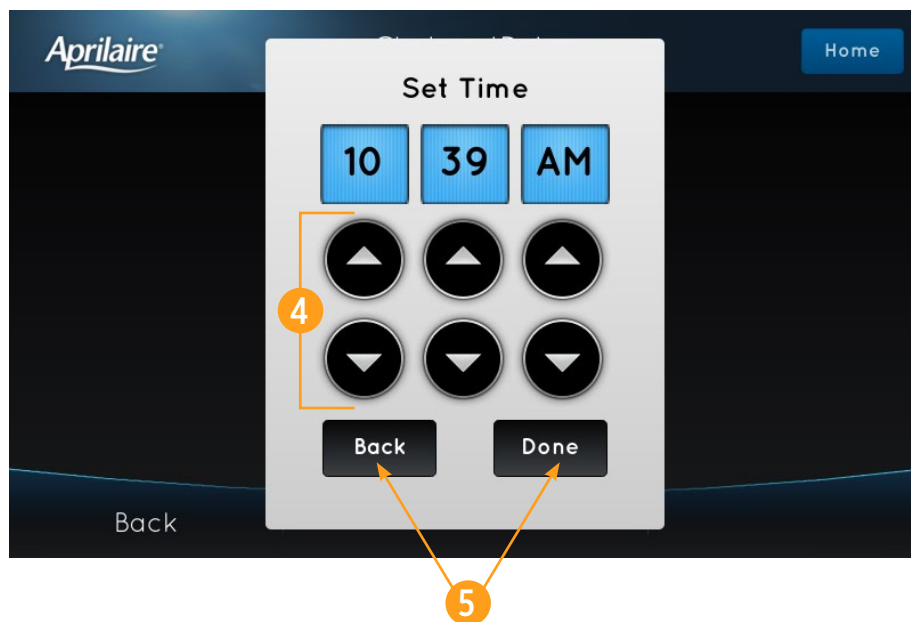
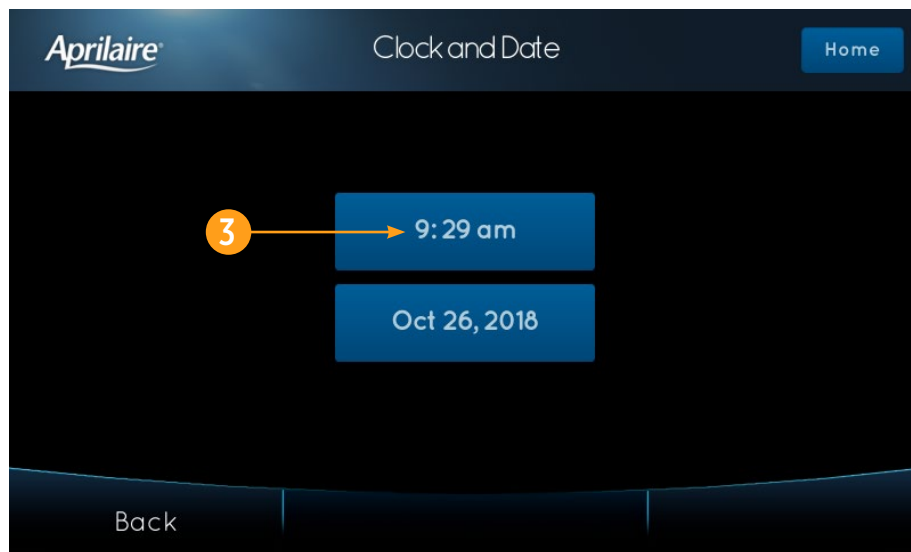
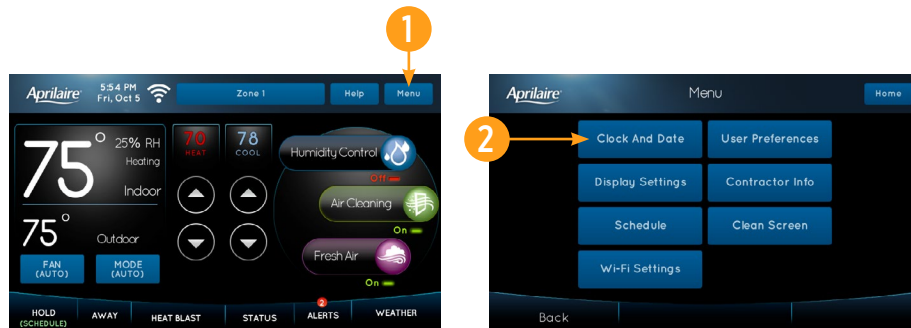
## CONTROL OPERATION

### SET TIME AND DATE

The control will automatically retrieve Time and Date from the internet (if connected and registered). If the control is used without an internet connection the time can be manually adjusted.

#### To set the time:

1. Touch **Menu** to open the Menu screen.
2. Touch **Clock And Date** to open the Clock and Date screen.
3. Touch the current time. The Set Time pop-up will appear.
4. Touch the ▲ or ▼ arrows to set the correct hour, minutes and AM/PM.
5. Touch **Done** to save any changes. Touch **Back** to discard your changes. The control will automatically discard your changes if one minute elapses without touching **Done**.

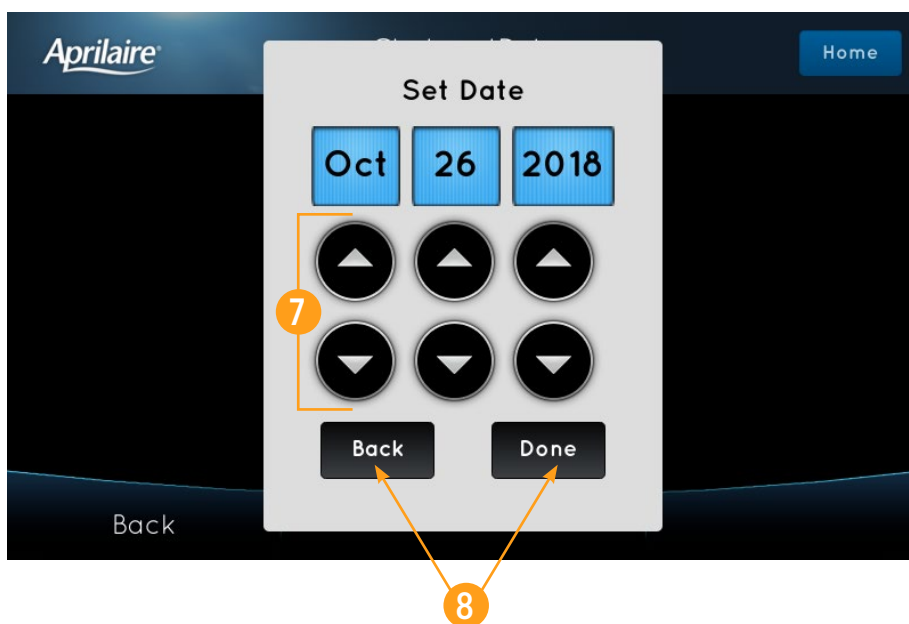
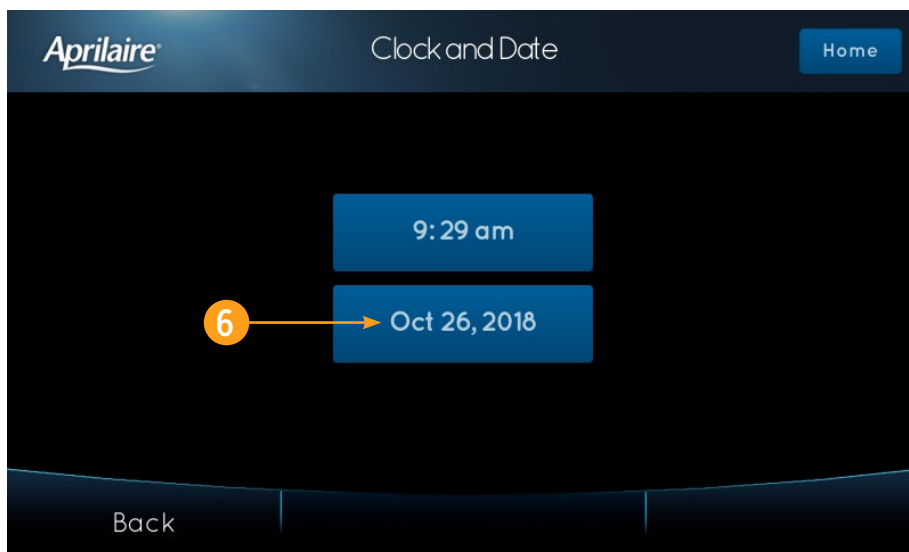


## CONTROL OPERATION

### SET TIME AND DATE (continued)

#### To set the date:

6. Touch the current date. The Set Date pop-up will appear.
7. Touch the ▲ or ▼ arrows to set correct month, date and year.
8. Touch **Done** to save any changes. Touch **Back** to discard your changes. The control will automatically discard your changes if one minute elapses without touching **Done**.

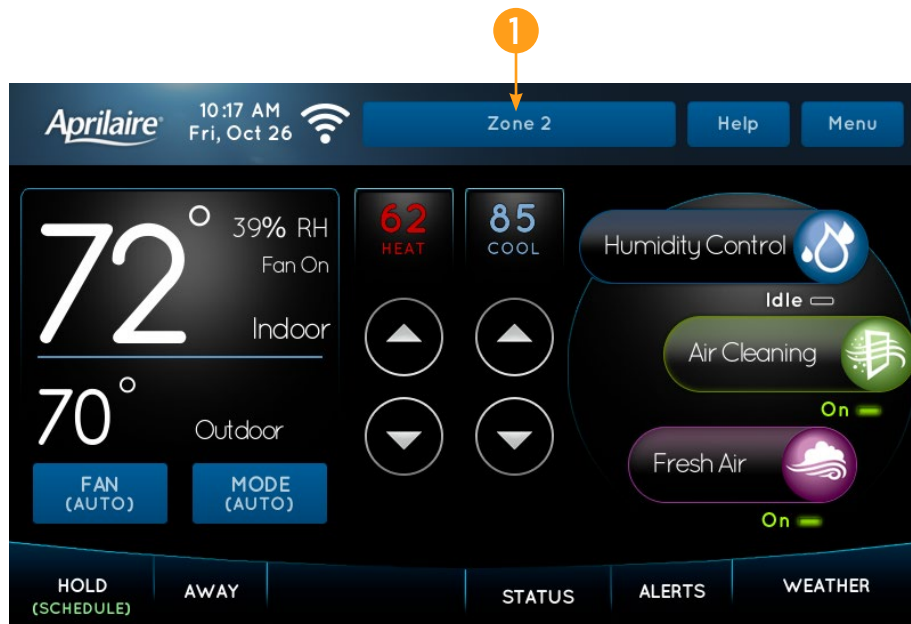


## ZONE/SENSOR OPERATION

### ZONE CONTROL

Additional zones can be controlled and scheduled similar to the primary zone by touching **Zone**.

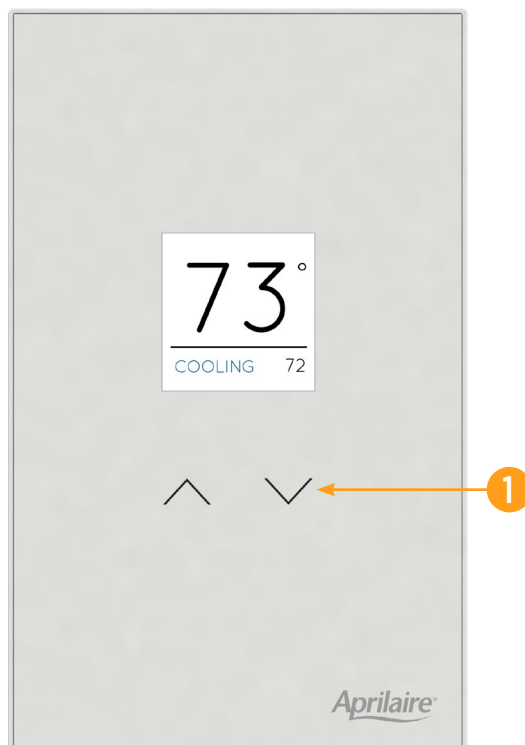
1. For example, to select Zone 2, press the **Zone** once. **Note:** The control will revert to Zone 1 if no changes are made for 40 seconds.



### SENSOR CONTROL

The 6000 Series sensor displays room temperature, heating/cooling or idle status and current set point. Only the set point can be adjusted from this sensor. All other zone functions can be accessed through the control.

1. Touch  $\wedge$  or  $\vee$  to adjust the temperature setpoint.



## SCHEDULE AND HOLDS

### UNDERSTANDING SCHEDULES

The daily schedule is split into four events:

**WAKE:** Temperature when you wake up in the morning.

**LEAVE:** Temperature when you are away from the house.

**RETURN:** Temperature when you return home.

**SLEEP:** Temperature you would prefer while sleeping.

The times shown in the table below are the defaults. These are the recommended settings, since they can reduce your heating/cooling expenses. The fan mode is pre-set to **AUTO** for all events.

The start time, temperature and fan mode of each event can be changed to fit your specific schedule. (See **Changing Schedules** section on pages 15-17.)

EVENT DESIGNATOR	START TIME	SET TEMPERATURE		FAN
		HEAT	COOL	
WAKE	6:00 AM	70°F (21°C)	78°F (25.5°C)	AUTO
LEAVE	8:00 AM	62°F (16.5°C)	85°F (29.5°C)	AUTO
RETURN	5:00 PM	70°F (21°C)	78°F (25.5°C)	AUTO
SLEEP	10:00 PM	62°F (16.5°C)	82°F (27.5°C)	AUTO

# SCHEDULE AND HOLDS

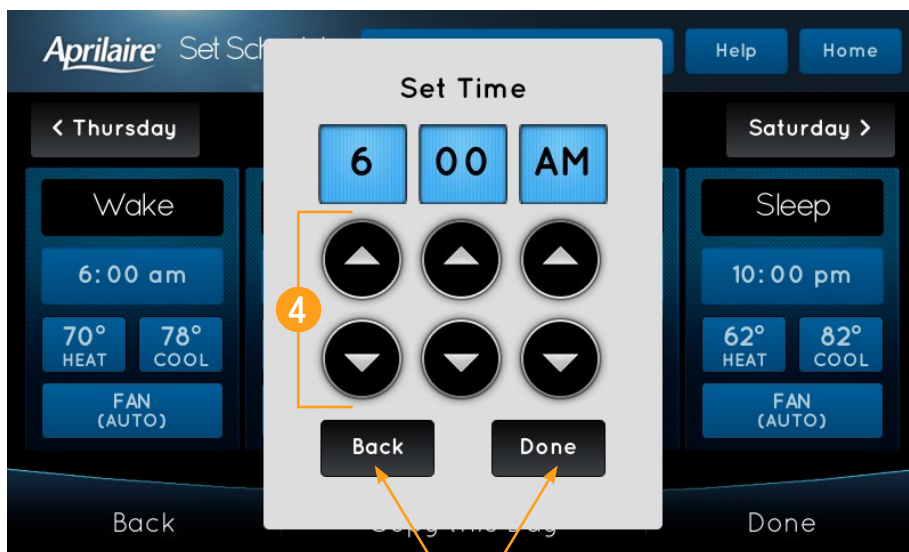
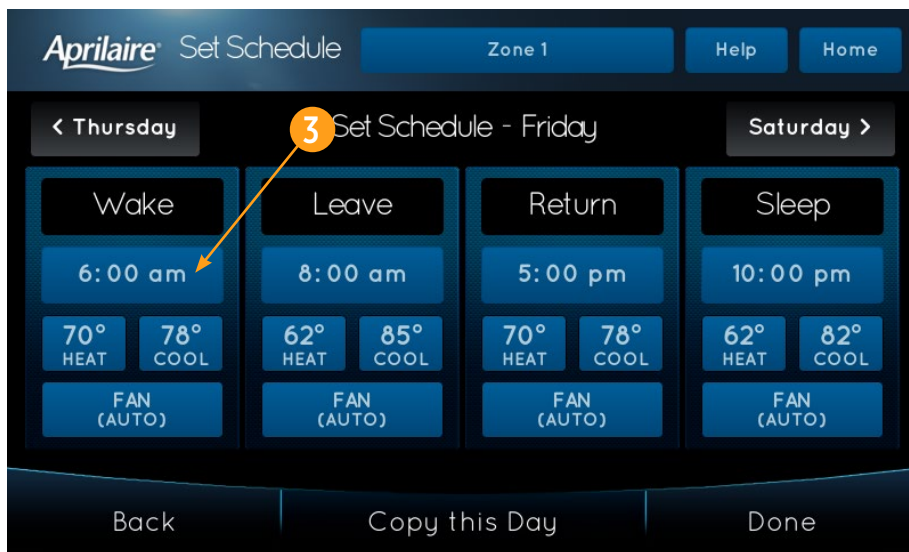
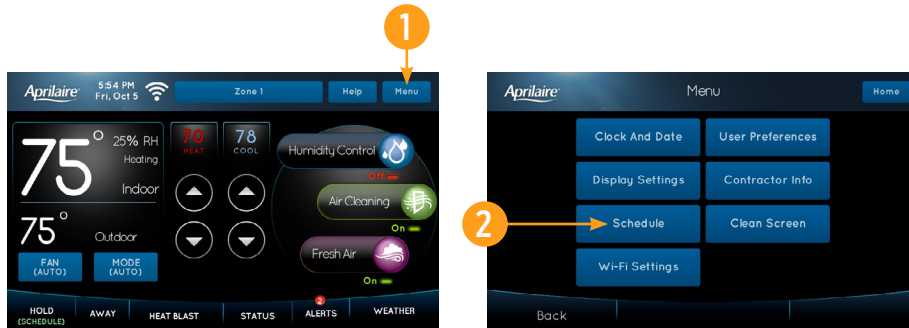
## CHANGING SCHEDULES

1. Touch **Menu** to open the Menu screen.
2. Touch **Schedule** to open the Set Schedule screen.

The current day of the week will be displayed on the Set Schedule screen. From this screen you can change the start time, heat and cool setpoints, and fan mode for each event for this day of the week. See page 17 for instructions on how you can copy this day's schedule to other days.

### To set the start time:

3. Touch the event start time. The Set Time pop-up will appear.
4. Touch the ▲ or ▼ arrows to set the desired event start time.
5. Touch **Done** to save any changes. Touch **Back** to discard your changes.





## SCHEDULE AND HOLDS

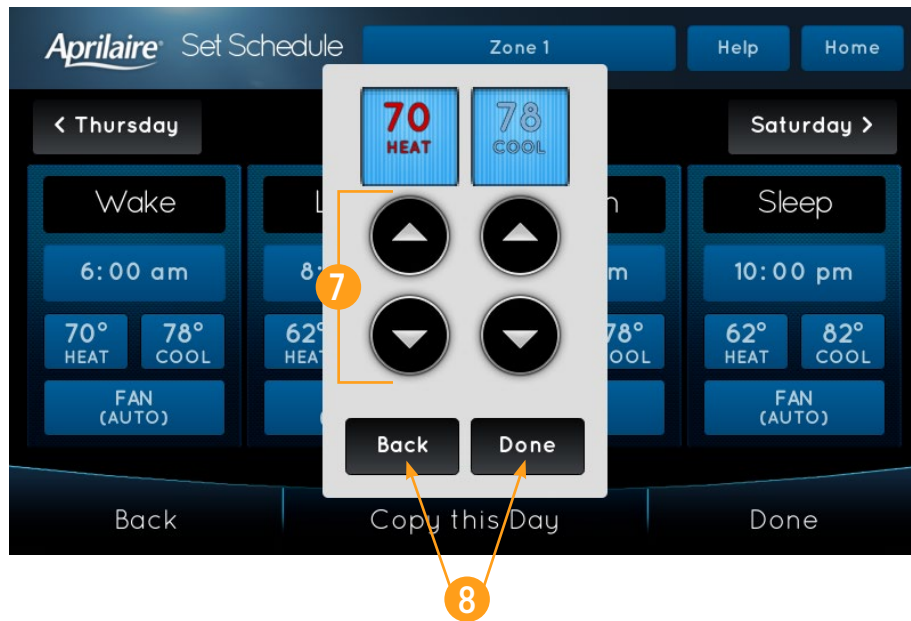
### CHANGING SCHEDULES (continued)

#### To set the temperature:

6. Touch the event heat or cool setpoint. The Set Temperature pop-up will appear.



7. Touch the ▲ or ▼ arrows to set the desired event temperature.
8. Touch **Done** to save any changes. Touch **Back** to discard your changes.

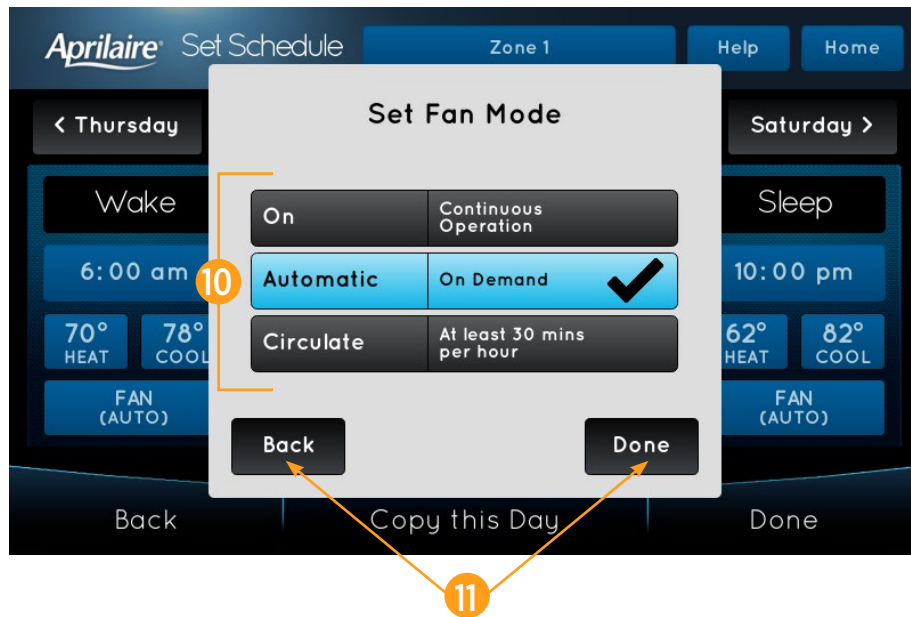


#### To set the fan mode:

9. Touch the event fan mode. The Set Fan Mode pop-up will appear.



10. Select the desired fan mode.
11. Touch **Done** to save any changes. Touch **Back** to discard your changes.



## SCHEDULE AND HOLDS

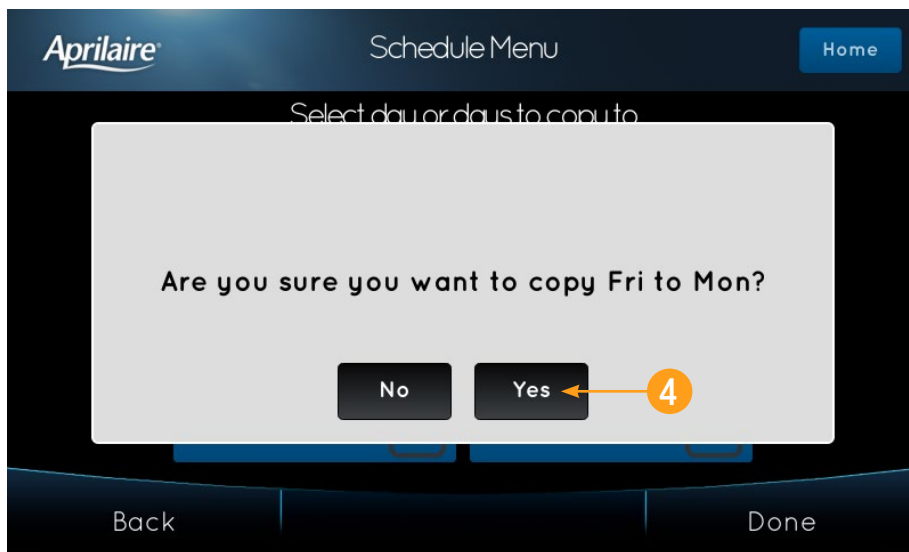
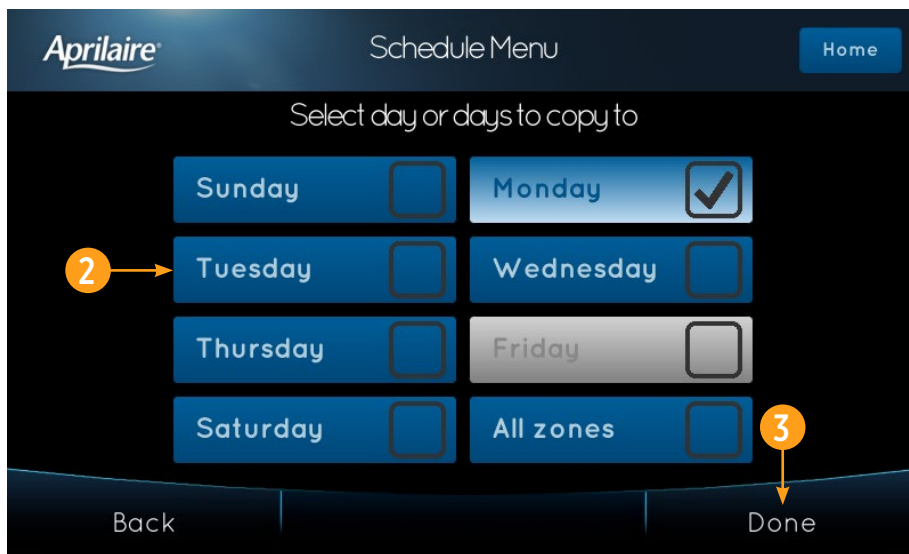
### CHANGING SCHEDULES (continued)

To copy one day's schedule to other days:

1. Touch **Copy this Day** to open the Schedule Menu screen.



2. Select the day(s) you want to copy the schedule to.
3. Touch **Done** when finished. You will then be prompted to confirm your selections.
4. Touch **Yes** to copy the schedule to the desired days. Touch **No** to return to the Schedule Menu screen without performing the schedule copy.



# SCHEDULE AND HOLDS

## SCHEDULE HOLDS

### Temporary Hold

1. Touch the ▲ or ▼ arrows to set your desired temperature. The Set Temporary Hold pop-up will appear.
2. The temporary hold will run until the current schedule event ends. You can select a different time by touching the ▲ or ▼ arrows on the Set Temporary Hold pop-up.
3. Touch **Done** to close the Set Temporary Hold pop-up.
4. To cancel the hold, touch **HOLD** on the main screen then **Cancel Hold** on the Set Temporary Hold pop-up.



### Permanent Hold

1. Touch the ▲ or ▼ arrows to set your desired temperature. The Set Temporary Hold pop-up will appear.
2. Touch **Switch to Permanent Hold**. The Set Temporary Hold pop-up will change to a Set Permanent Hold pop-up. The time and the ▲ and ▼ arrows will be grayed-out.
3. Touch **Done** to close the Set Hold pop-up.
4. To cancel the hold, touch **HOLD** on the main screen then **Cancel Hold** on the Set Permanent Hold pop-up.



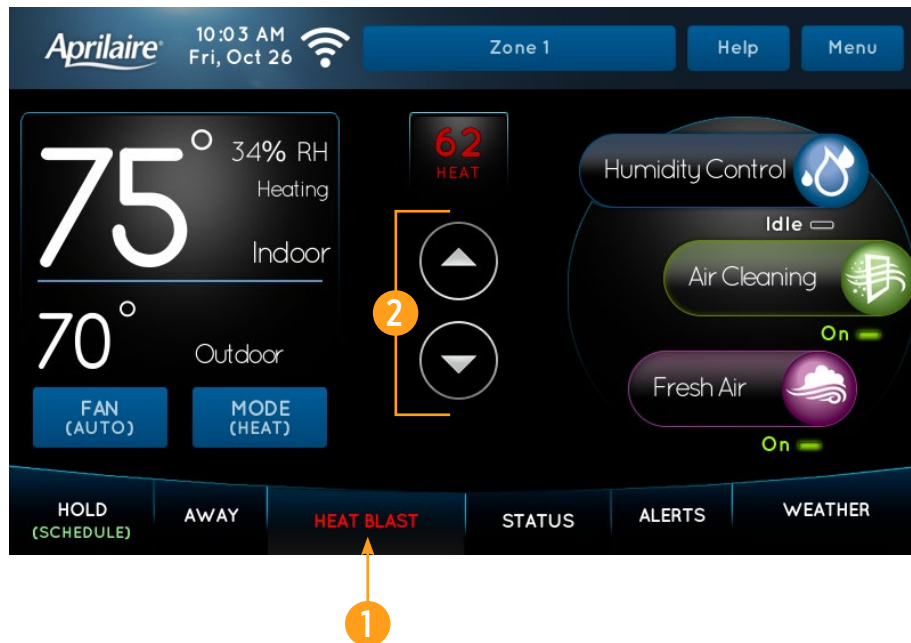
## SCHEDULE AND HOLDS

### SCHEDULE HOLDS (continued)

#### Heat Blast®

Heat Blast will raise the current room temperature by 3°F to 5°F once, and then resume normal operation. This feature is only available if it was enabled by your installer and the control is in Heat or Emergency Heat mode.

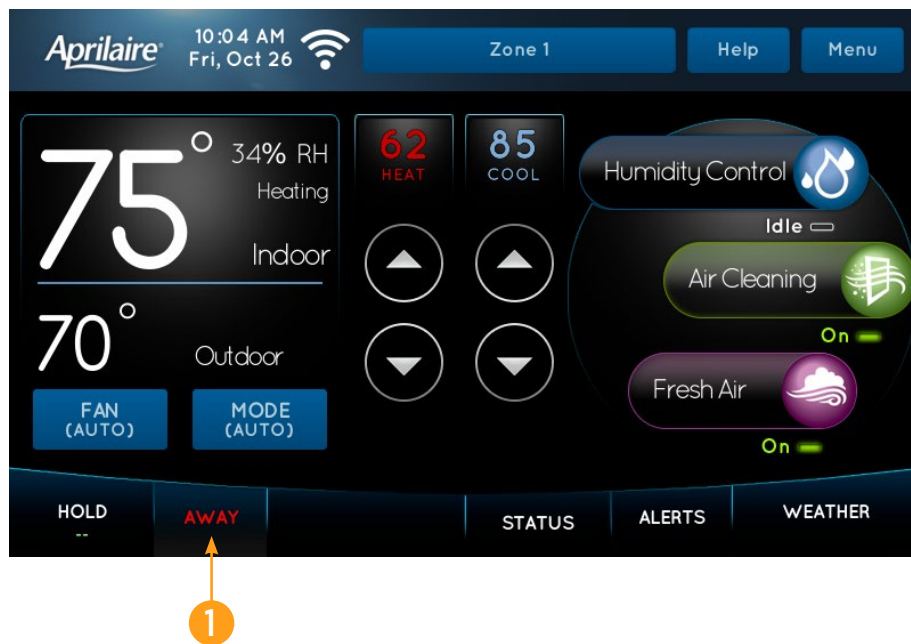
1. Touch **HEAT BLAST** to activate Heat Blast.
2. Touch **HEAT BLAST** again, or adjust the temperature with the ▲ or ▼ arrows to cancel Heat Blast.



#### Away

The Away feature allows the control to switch to predefined setpoints simply by touching **AWAY**. The default cooling setpoint is 85°F (29.5°C), the default heating setpoint is 62°F (16.5°C) and the default fan mode is Auto. The default settings can be modified in the User Preferences screen. See pages 31-32.

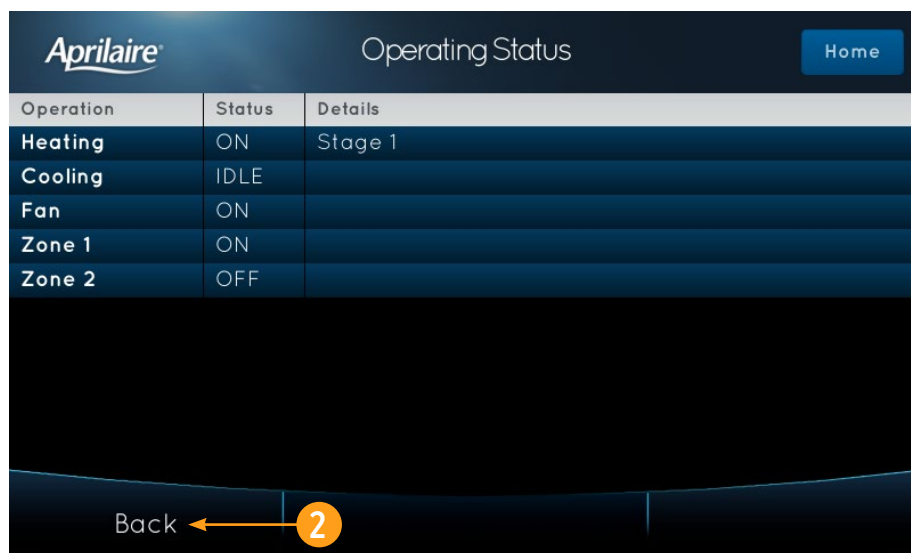
1. Touch **AWAY** to activate the Away mode. Touch **AWAY** again to deactivate the Away mode.



## STATUS

The Operating Status screen shows you the current status of all equipment controlled by this system. ON indicates that the equipment is currently active. OFF indicates that the equipment is not active and cannot become active without changing its corresponding mode. IDLE means that the equipment is not currently active but could become so if measured conditions change.

1. Touch **STATUS** to open the Operating Status screen.
2. Touch **Back** to return to the Home screen.



## ALERTS

Alerts are used to communicate special information to you. Some of the alerts are controlled by your settings (i.e. High/Low Temperature, High/Low Relative Humidity [RH]), and others are system alerts that may require a specific action by you or your installer to resolve.

If any alerts are active, a red badge with the number of alerts will be displayed on the home screen.

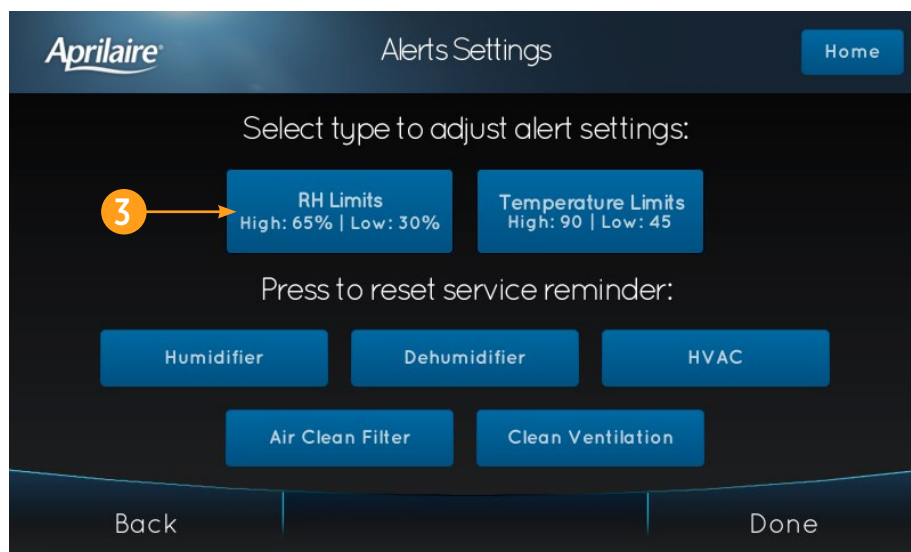
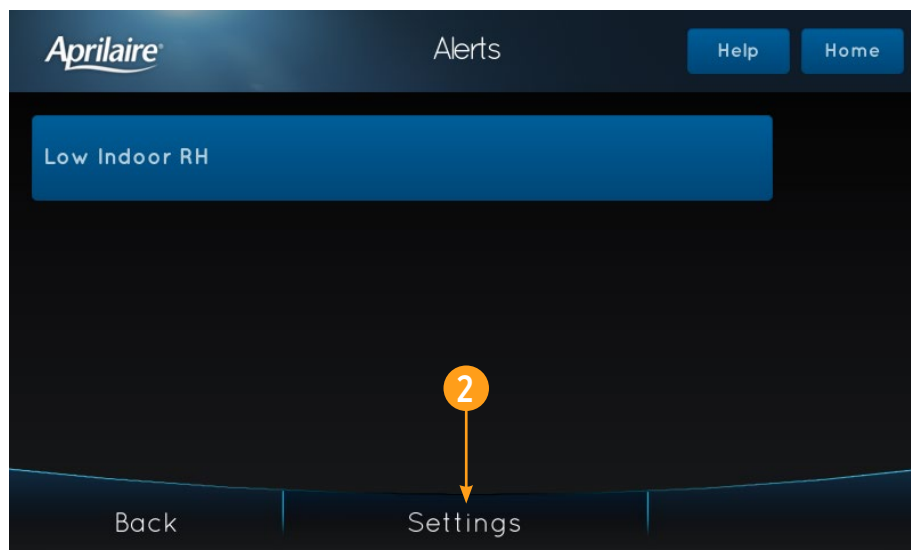
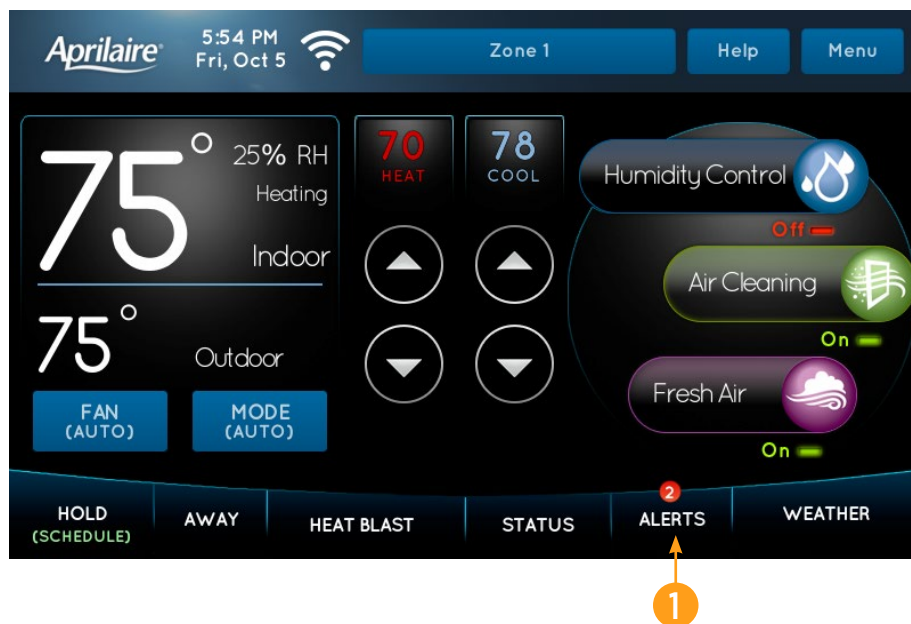
1. Touch **ALERTS** to view the active Alerts screen.

Any conditions that fall outside the parameters set for temperature and humidity will create an active alert and will appear here. The limits for these alerts can be configured in the Settings screen.

2. Touch **Settings** to open the Alerts Settings screen.

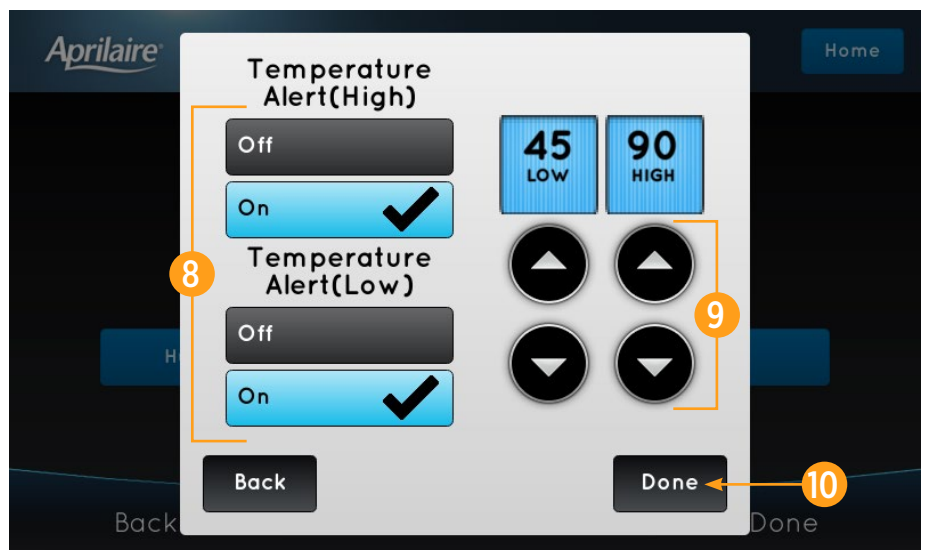
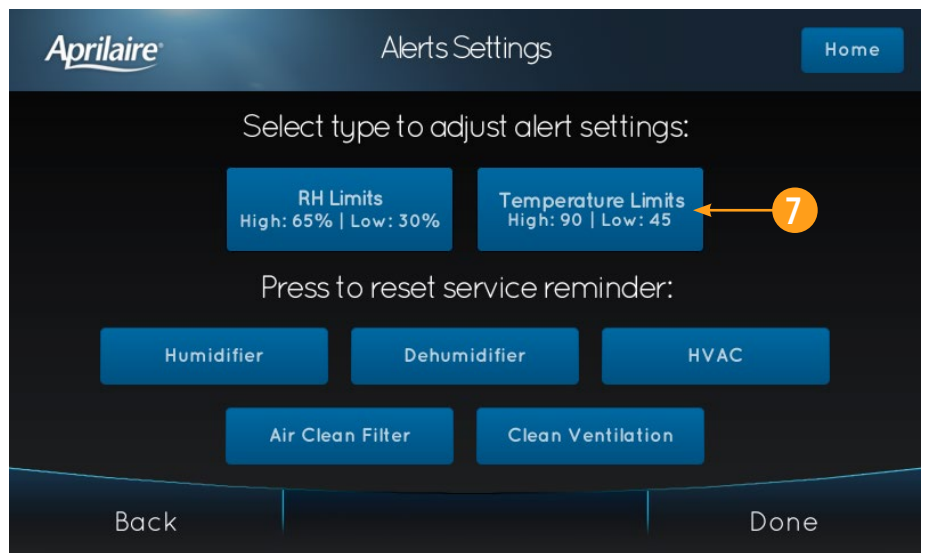
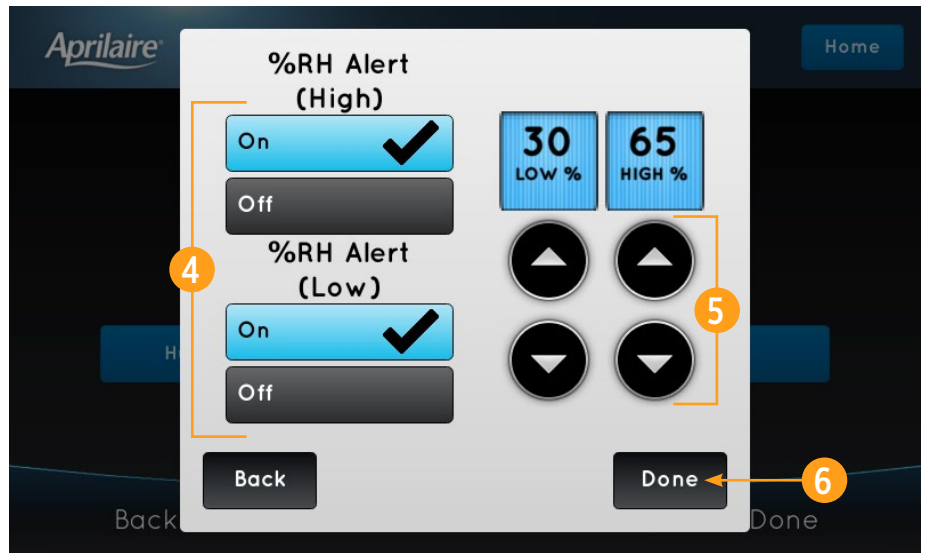
The current limits can be viewed or changed here.

3. Touch **RH Limits** to open the RH Alert pop-up.



## ALERTS

4. Touch **Off** to disable the High RH or Low RH limit. Touch **On** to enable the High RH or Low RH limit.
5. Touch the ▲ or ▼ arrows to adjust the corresponding limit.
6. Touch **Done** to save your changes. Touch **Back** to close the pop-up without saving any changes.
7. Touch **Temperature Limits** to open the Temperature Alert pop-up.
8. Touch **Off** to disable the High Temperature or Low Temperature limit. Touch **On** to enable the High Temperature or Low Temperature limit.
9. Touch the ▲ or ▼ arrows to adjust the corresponding limit.
10. Touch **Done** to save your changes. Touch **Back** to close the pop-up without saving any changes.



# ALERTS

## MAINTENANCE REMINDERS

Maintenance reminders appear when it is time to service your equipment, based on the limits set by your installer.

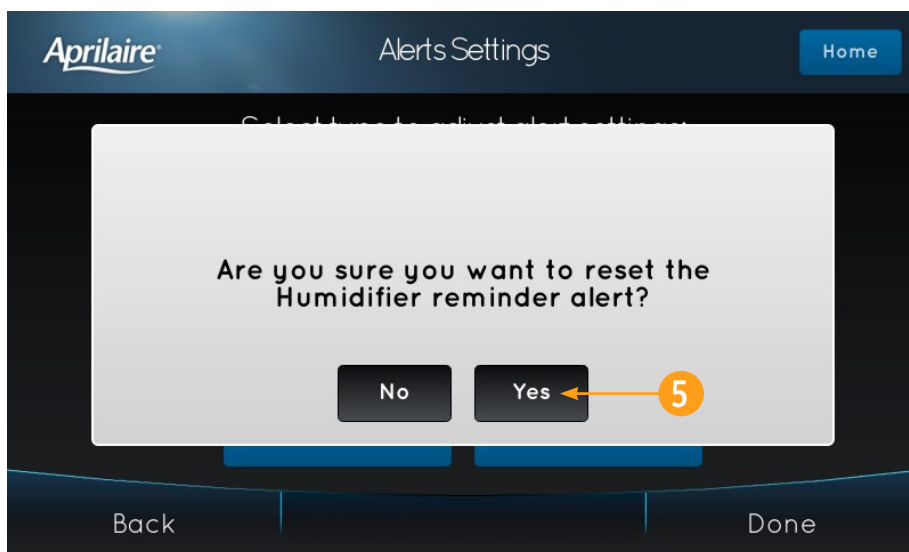
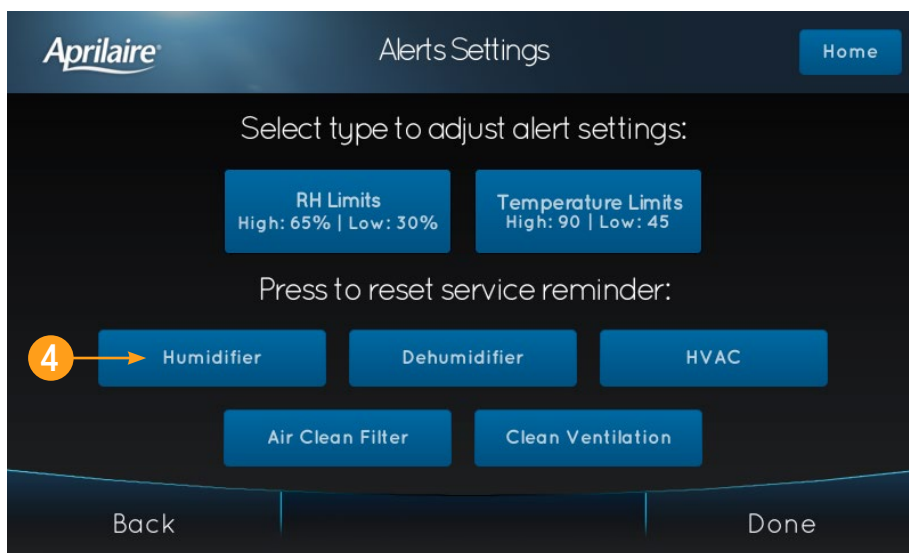
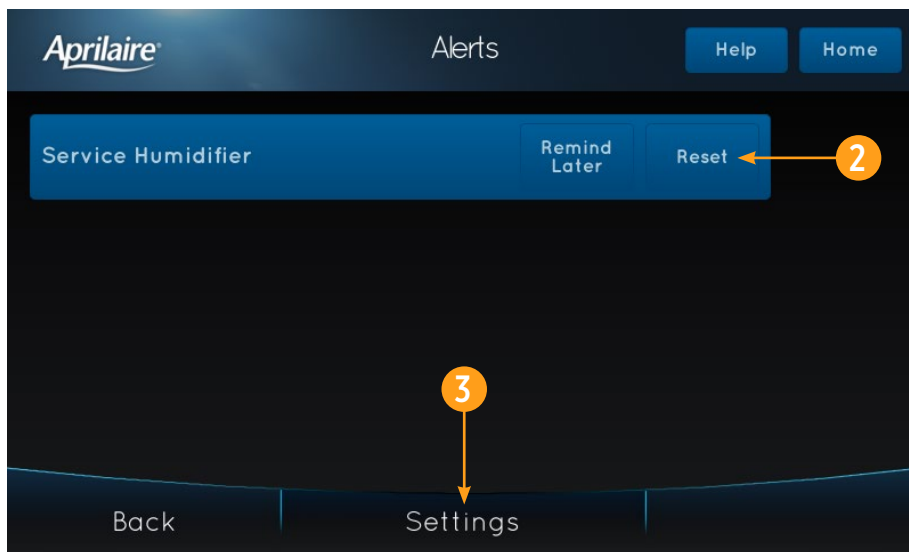
In some cases, you may need to service your installed equipment before the maintenance reminder has appeared on the control. Any maintenance reminders that have been configured by your installer but have not expired can be viewed in the Settings screen.

1. Touch **ALERTS** to open the Alerts screen.



2. Maintenance reminders have two options: **Remind Later** will hide the reminder for two weeks and then redisplay the alert. **Reset** will restart the reminder interval, and should be used after the equipment has been serviced.
3. Touch **Settings** to open the Alerts Settings screen.
4. Touch the installed equipment corresponding to the maintenance reminder you want to reset. A confirmation dialog box will appear.
5. Touch **Yes** to confirm your choice. Touch **No** to return to the Alerts Settings screen without resetting the maintenance reminder timer.

Contact your local dealer for service.





## WEATHER

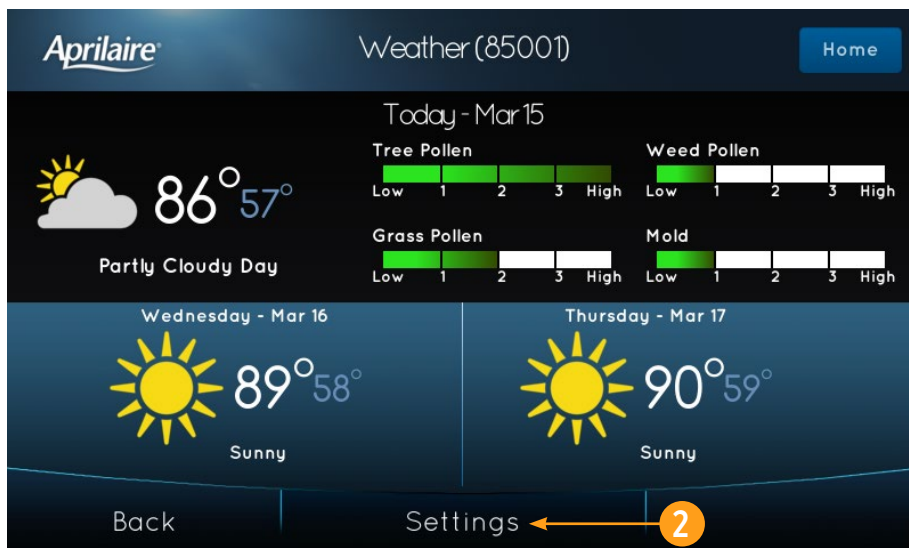
The Weather screen displays the current weather, two-day forecast and current pollen information, if available. The information displayed is based on your postal code.

1. Touch **WEATHER** to open the Weather screen.
2. Touch **Settings** to open the Weather Settings screen.
3. Touch the postal code box, enter your local postal code and touch **Done** when finished.

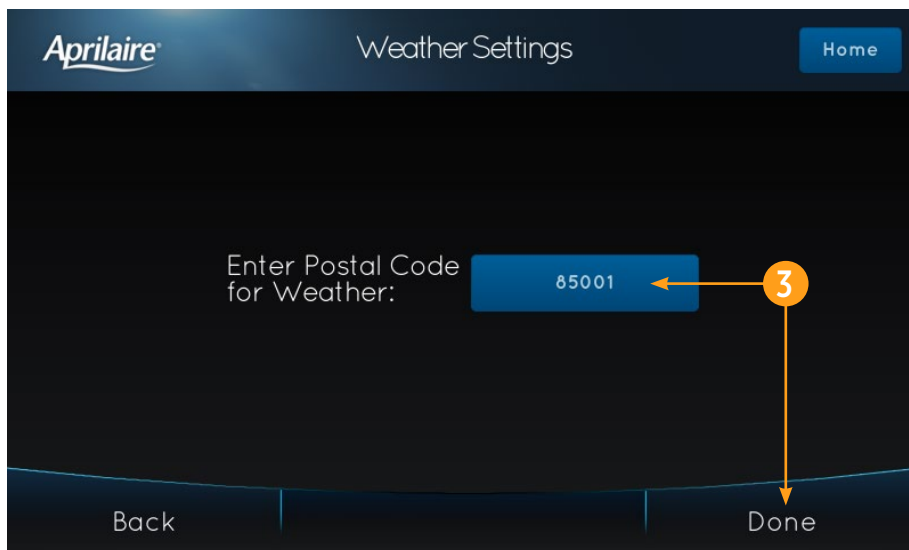
**Note:** Pollen information is only displayed when available.



1



2



3

# INDOOR AIR QUALITY FUNCTIONS

## HUMIDITY CONTROL

This system can control the relative humidity (RH) in your home when you have an additional humidifier and/or dehumidifier installed. Dehumidification can be achieved one of two ways, either with a whole-home dehumidifier or with your air conditioning equipment. See page 27 for details. If a humidifier is installed, it can be controlled in one of two modes, Automatic or Manual. These settings are configured by your installer.

### Automatic Mode

In automatic mode, you will receive an optimal amount of humidity so that your home and its furnishings are protected from the damaging effects of excessively high or low humidity during the heating season. The control automatically adjusts your home's RH based on the outdoor temperature. This temperature is measured by a sensor attached outside your home.

The humidity setting needs to be set initially to meet your home's conditions. Please follow these steps when adjusting your control.

1. Touch **Humidity Control** to open the Humidity Control Select screen.
2. Touch **Humidifier** to open the Humidifier Control screen.
3. The normal humidity range is 3-5. Use setting **3** initially.

During the next 24-48 hours, it may be necessary to adjust the setting for more or less humidity, depending on your personal comfort and home's requirements.

During the coldest portion of your first heating season, minor adjustments may be necessary to prevent window condensation. This will depend on your home's construction.

The relative humidity in your home will then be accurately controlled to meet your needs and should not need further adjustment during future heating seasons.



## INDOOR AIR QUALITY FUNCTIONS

### HUMIDITY CONTROL (continued)

#### Manual Mode

In manual mode, it is important to anticipate a drop in outdoor temperature and to reduce the setting accordingly to avoid excessive condensation. Use the table on the right side of the Humidifier Control screen to determine the proper RH setting.

4. Touch the ▲ or ▼ arrows to adjust the RH accordingly, and then touch **Done** when finished.

#### Dehumidification

The control will allow you to set the desired RH level in your home and can be used to turn dehumidification on or off.

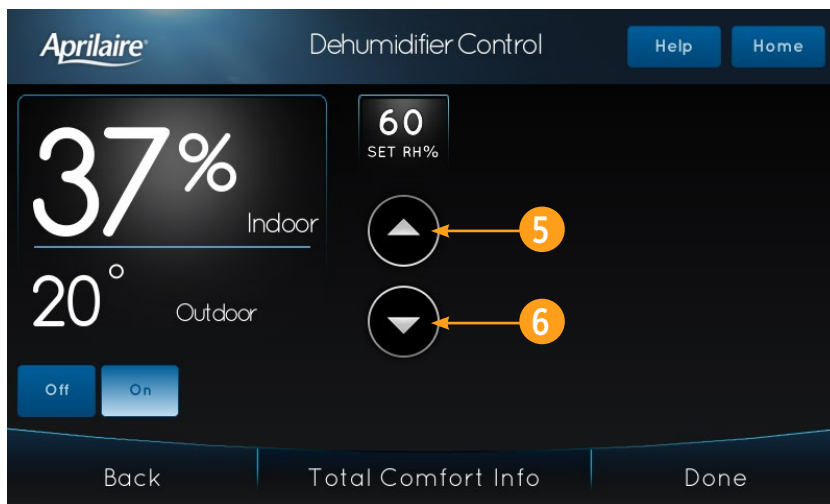
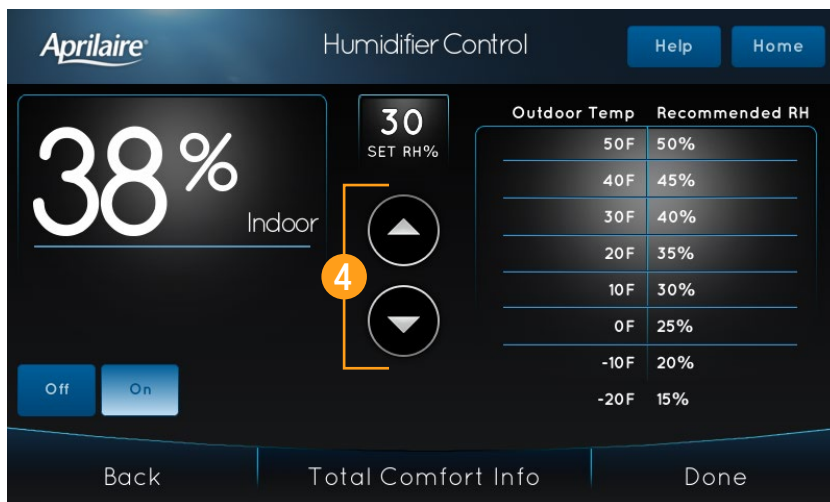
5. Touch the ▲ arrow to increase the amount of humidity the dehumidifier will allow. The air will be less dry and the dehumidifier will run less.
6. Touch the ▼ arrow to decrease the amount of humidity the dehumidifier will allow. The air will be less humid and the dehumidifier may run more.

If dehumidification is done with the air conditioner, the control will cool up to 3°F beyond the cooling setpoint for dehumidification.

**Note:** Overcooling may not be sufficient to meet the dehumidification setpoint.

Use the dehumidification adjustment to set the dehumidification setpoint to 60% when first installed. Allow dehumidification to run until the initial setpoint is reached, before deciding if you want to change the humidity setting.

Your comfort is the best measure of how to adjust your setting. When first installed, your dehumidifier has to remove all the moisture that is initially in your home. The home acts like a sponge so the moisture in the materials of your home is at the same level as the air. After drying the air, the materials of the home will release the moisture back into the air until they are again at the same level. As a result, it is not uncommon for dehumidification to operate for an extended period of time when it is first installed.



**Energy Saving Tip #1:** Adjust the setting to be as high as is comfortable to reduce dehumidification run time – if it feels clammy or smells damp or moldy, lower the setting. Set the Dehumidifier Control to **Off** when you open your windows.

**Energy Saving Tip #2:** If your home will be unoccupied for an extended period during the summer, set the Dehumidifier Control setpoint to 60% RH and your cooling setpoint as high as you feel comfortable. Consult appropriate professionals regarding the highest temperature that is safe for your pets or possessions. This will keep the humidity at a controlled level to help prevent mold while minimizing the amount of the cooling energy used. Vacation hold is a convenient way to adjust the dehumidification and cooling setpoint while you are away.

## INDOOR AIR QUALITY FUNCTIONS

### EVENT BASED™ AIR CLEANING

If an air cleaner is installed, the control will activate the fan for the purpose of air cleaning.

1. Touch **Air Cleaning** on the home screen to open the Air Cleaner Control screen.

### TEMPORARY EVENTS

**Event Clean (3 Hour):** When you need the fan to run non-stop for a short while, such as while vacuuming, choose this option. When selected, the air cleaner will run continuously for 3 hours and then return to the previous Permanent Mode.

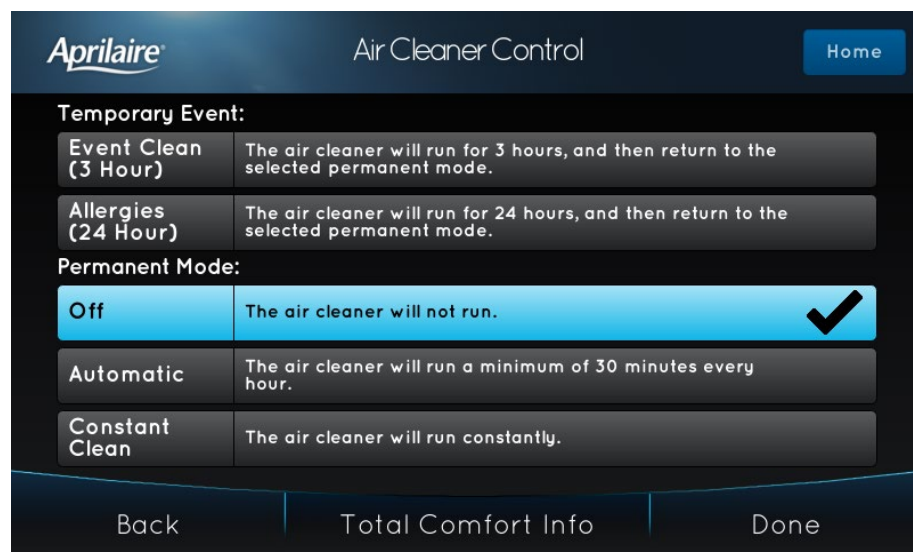
**Allergies (24 Hour):** When seasonal allergies spike and outside air quality is at its worst, choose this option. When selected, the air cleaner will run continuously for 24 hours and then return to the previous Permanent Mode.

### PERMANENT MODES

**Off:** The control will not call for the fan to run for the purpose of air cleaning. Air Cleaning will still occur during normal fan operation, during heating, cooling or other indoor air quality events.

**Automatic:** The air cleaner will run a minimum of 30 minutes every hour. The air cleaner will monitor the amount of time your heating and cooling system runs. If 30 minutes is not reached, the air cleaner will automatically turn on. This will provide the most-efficient balance between air cleaning and energy use.

**Constant Clean:** This option will provide the maximum amount of air cleaning available. The air cleaner will be active for 24 hours a day, 7 days a week.



## INDOOR AIR QUALITY FUNCTIONS

### FRESH AIR

If ventilation is installed, fresh air is periodically drawn into your home through your heating and cooling system. The schedule is based on installer-calculated requirements. Occasionally, you may need more fresh air than what is scheduled. This control offers several options.

1. Touch **Fresh Air** to open the Fresh Air Control screen.

### TEMPORARY EVENTS

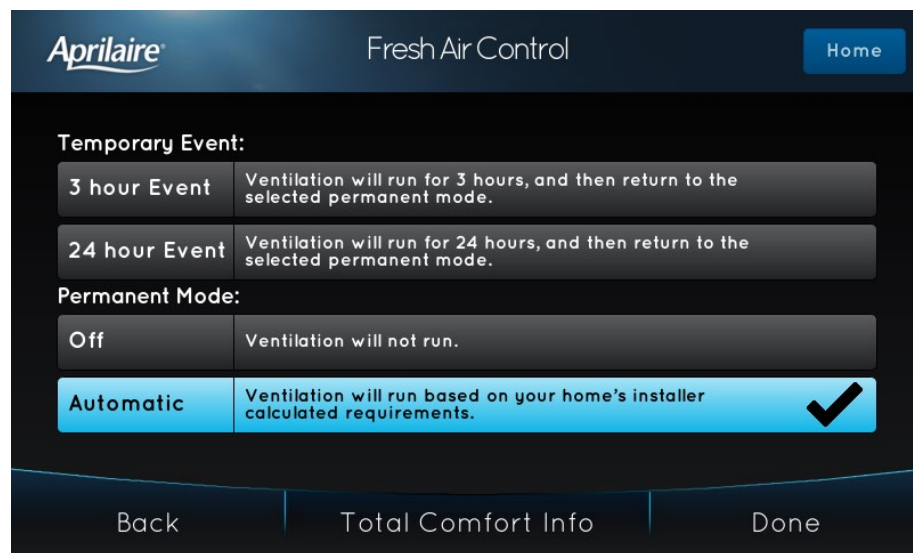
**3 hour Event:** When you need additional fresh air brought into the home for a short while, such as after cooking, choose this option. Ventilation will run continuously for 3 hours and then return to the previous Permanent Mode.

**24 hour Event:** When you want a large amount of fresh air to be brought into the home, such as on a day with desirable outdoor conditions, choose this option. Ventilation will run continuously for 24 hours and then return to the previous Permanent Mode.

### PERMANENT MODES

**Off:** When you want to override the normal schedule and disable ventilation, such as when the home will not be used or when conditions outside are undesirable due to a high allergen presence or similar, choose this option. Ventilation will not run.

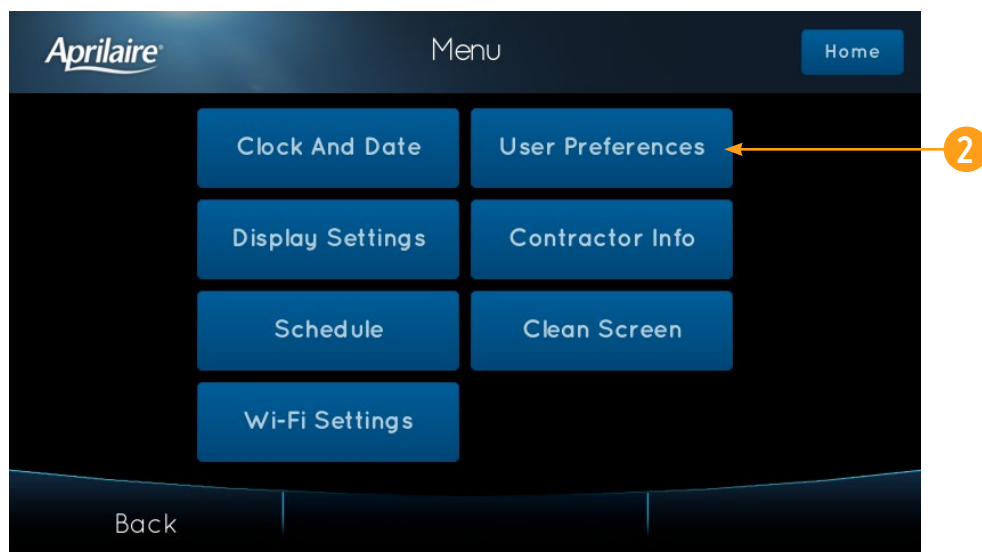
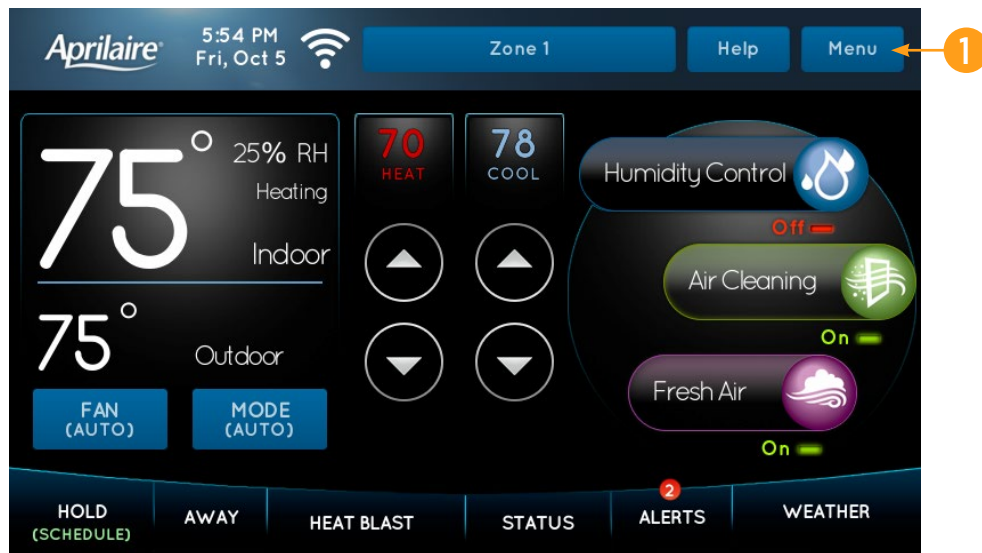
**Automatic:** Ventilation will cycle based on the time calculated by your installer to meet your home's minimum requirements.



## USER PREFERENCES

This control comes with a programmable schedule, a temperature scale set to Fahrenheit, default Away settings and with no screen lockout in place. These settings may not suit every homeowner's needs and can be adjusted in the User Preferences screen.

1. Touch **Menu** to open the Menu screen.
2. Touch **User Preferences** to open the User Preferences screen.



## USER PREFERENCES

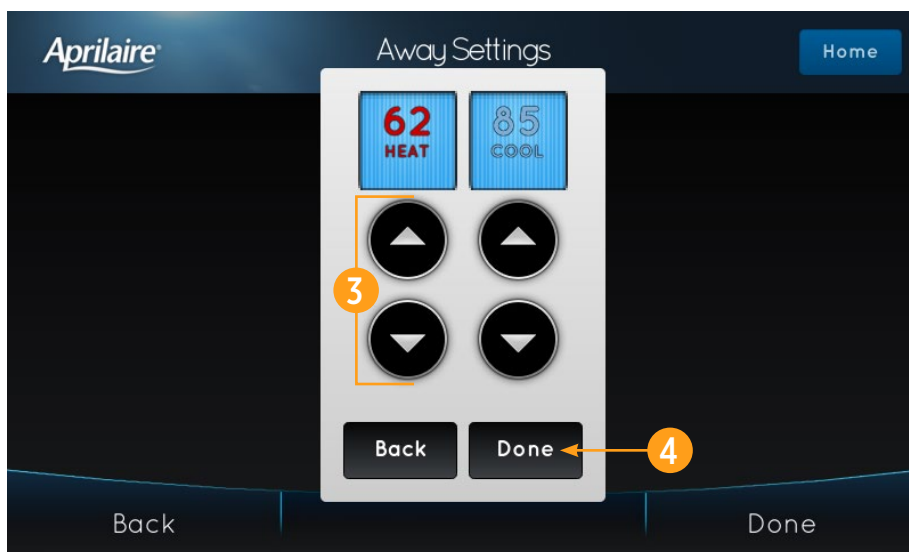
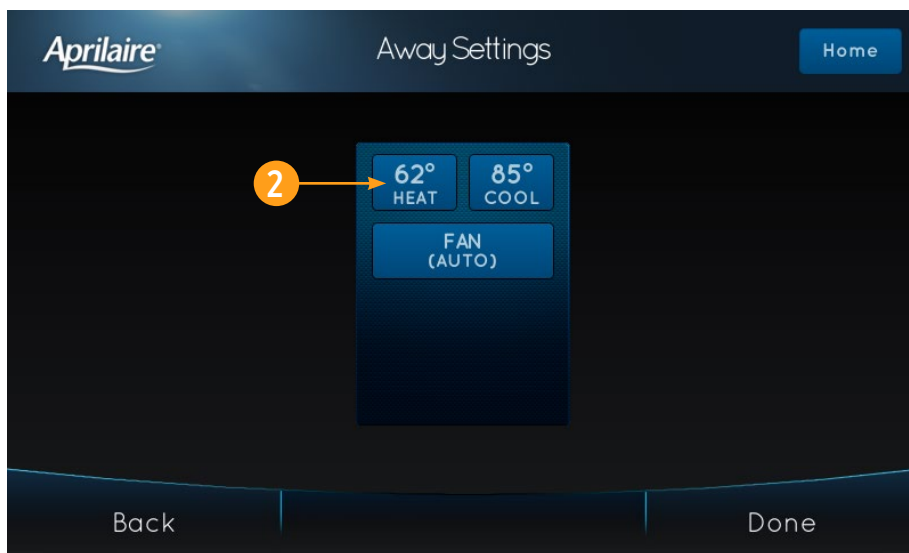
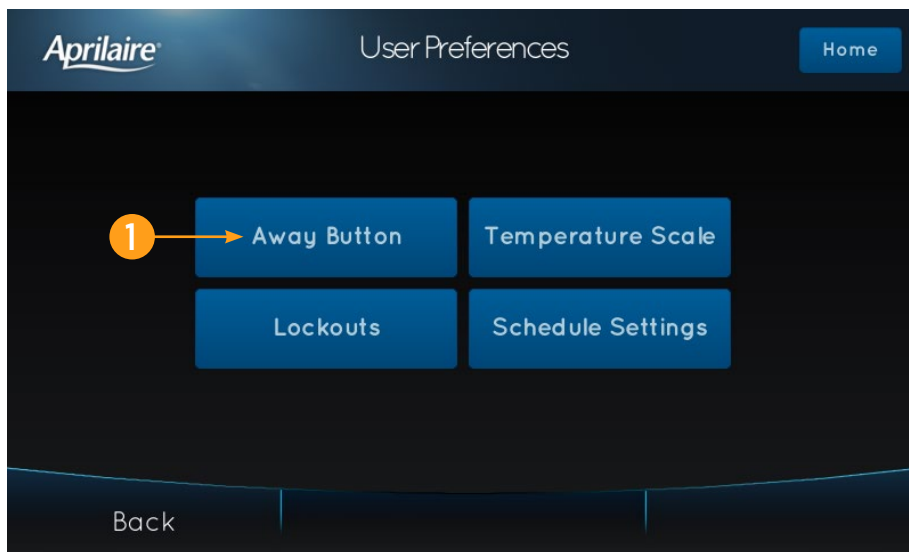
### AWAY BUTTON

While this control has heating and cooling setpoints pre-programmed for use with the Away feature, you may prefer other temperatures. The steps below do not activate or deactivate the Away mode, but they do tell the control what setpoints to use when you choose to activate it.

1. Touch **Away Button** to open the Away Settings screen.

The current Heat and Cool setpoints and Fan modes are shown and can be changed by touching their respective settings. These are the settings that will be used while Away is active.

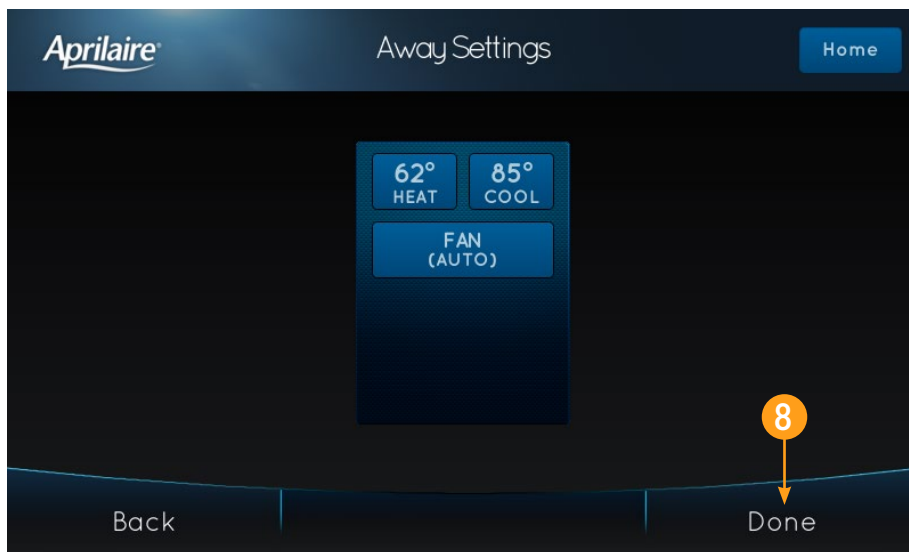
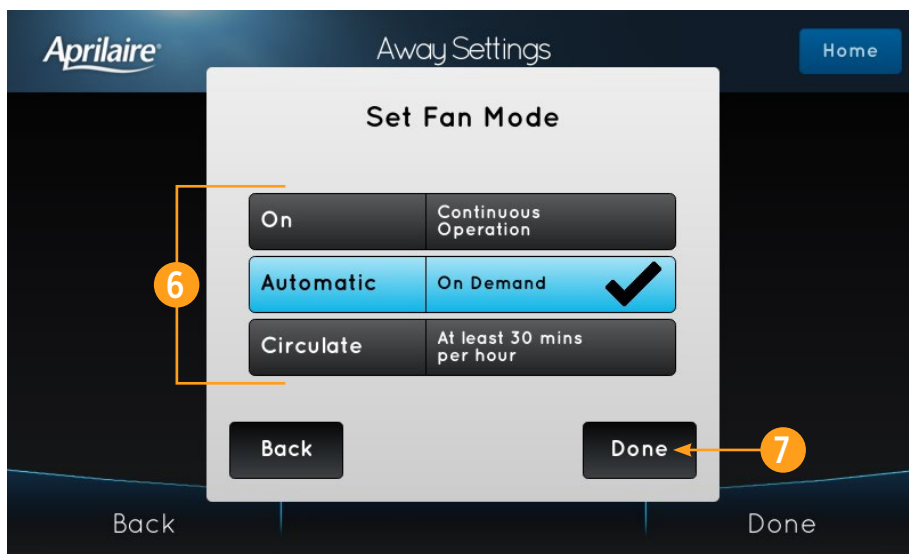
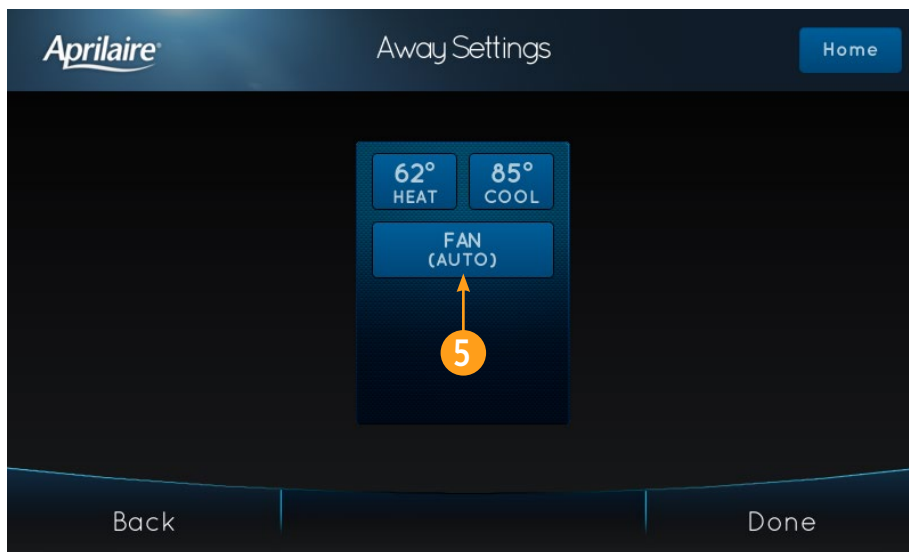
2. Touch **HEAT** or **COOL** to open the temperature pop-up.
3. Touch the ▲ or ▼ arrows to adjust the setpoints to be used while Away is active.
4. Touch **Done** to save any changes.  
Touch **Back** to discard your changes.



## USER PREFERENCES

### AWAY BUTTON (continued)

5. Touch **FAN** to open the Set Fan Mode pop-up.
6. Select the fan mode to be used when Away is active.
7. Touch **Done** to save any changes. Touch **Back** to discard your changes.
8. Touch **Done** to save all changes. Touch **Back** to discard all changes.





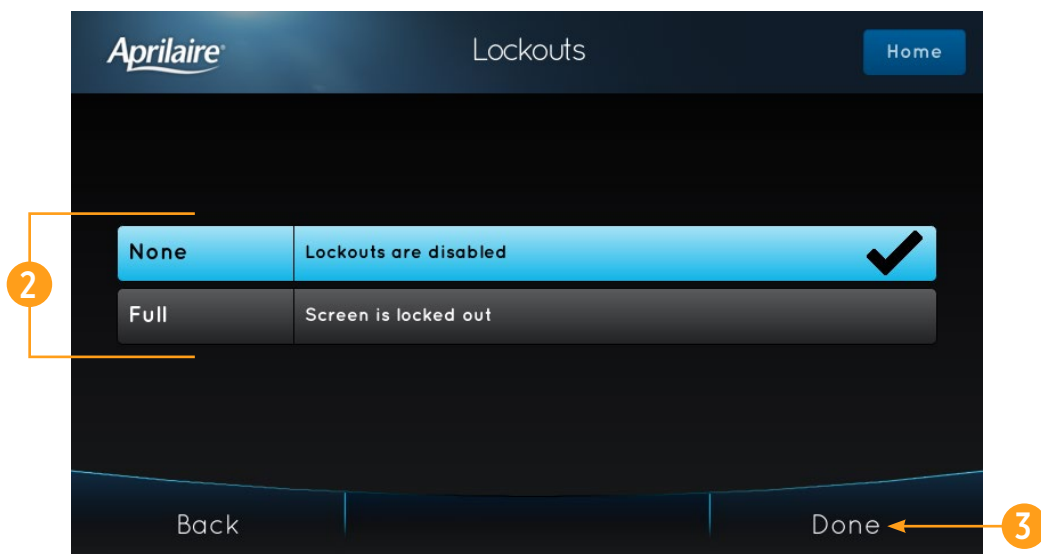
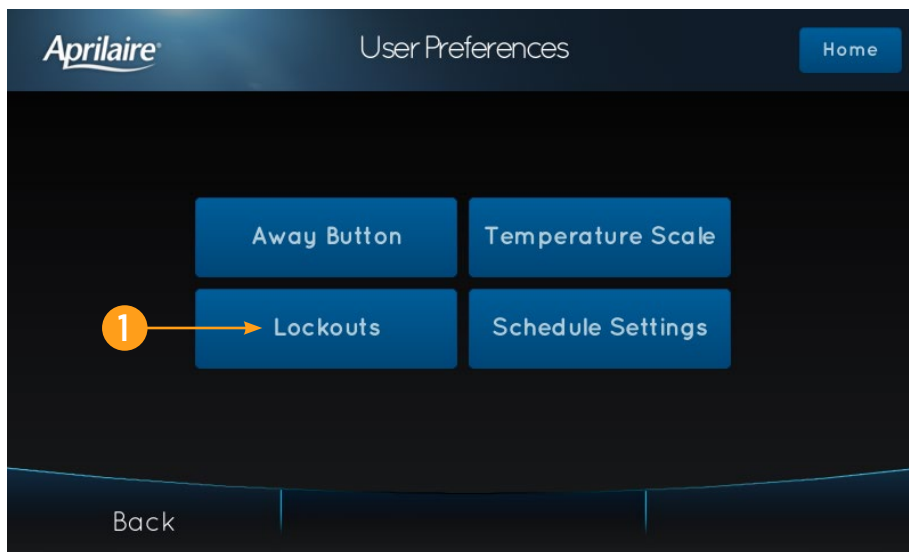
## USER PREFERENCES

### LOCKOUTS

A lockout is used to prevent any changes to the control from the Home screen.

1. Touch **Lockouts** to open the Lockouts screen.
2. Select **Full** to enable the control lockout. Select **None** to disable the control lockout.
3. Touch **Done** to save the changes.

**Note:** To temporarily override the full lockout for 30 seconds, hold **Menu** on the home screen for 10 seconds.

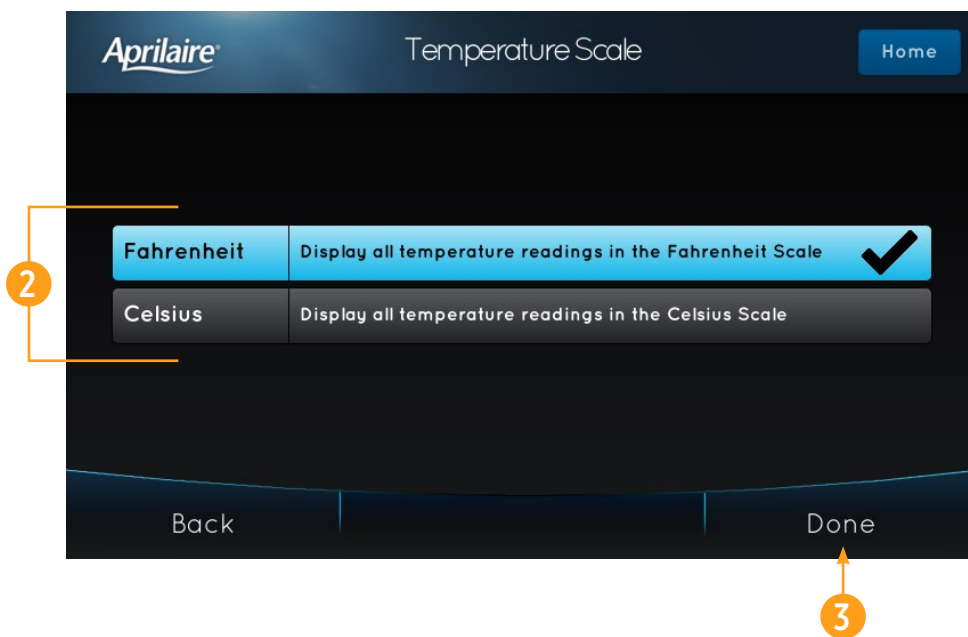
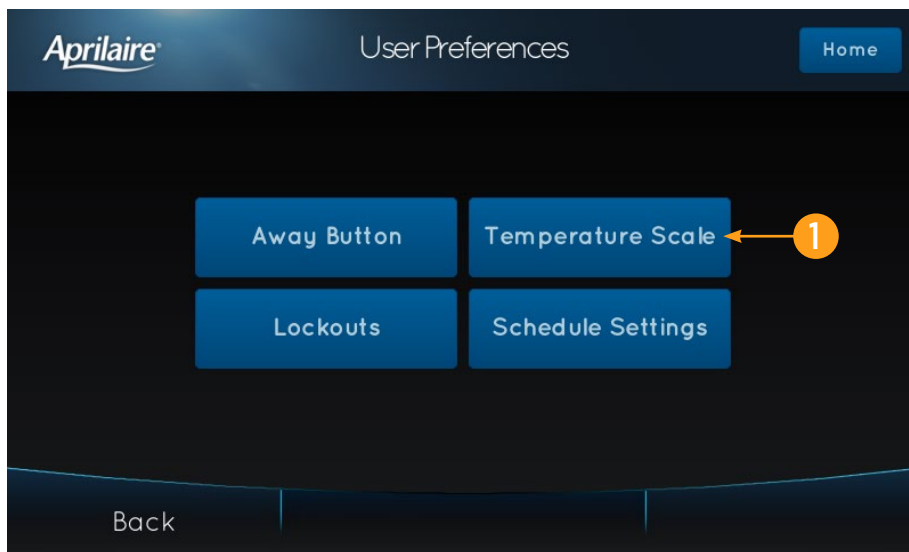


## USER PREFERENCES

### TEMPERATURE SCALE

The temperature scale on the control can be set to Fahrenheit or Celsius. This affects all settings in the control and sensors.

1. Touch **Temperature Scale** to open the Temperature Scale screen.
2. Select **Fahrenheit** or **Celsius**.
3. Touch **Done** to save any changes.  
Touch **Back** to discard any changes.

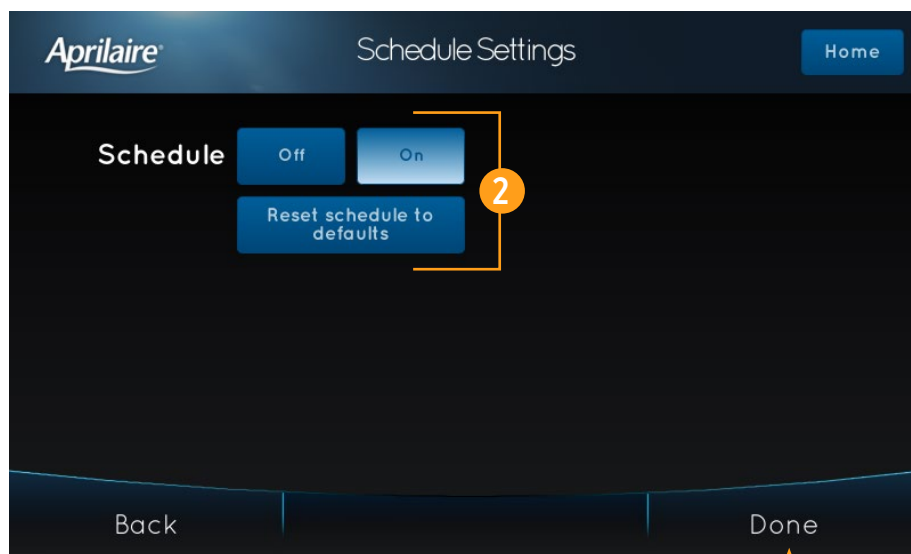
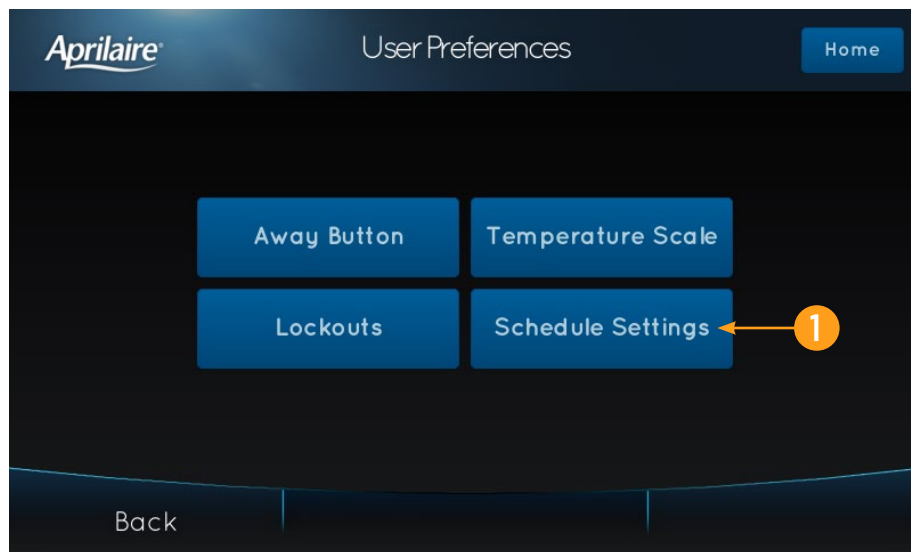


## USER PREFERENCES

### SCHEDULE SETTINGS

While the schedule settings can be user-adjusted, it may become necessary to reset the schedule to the factory defaults or to disable the schedule entirely.

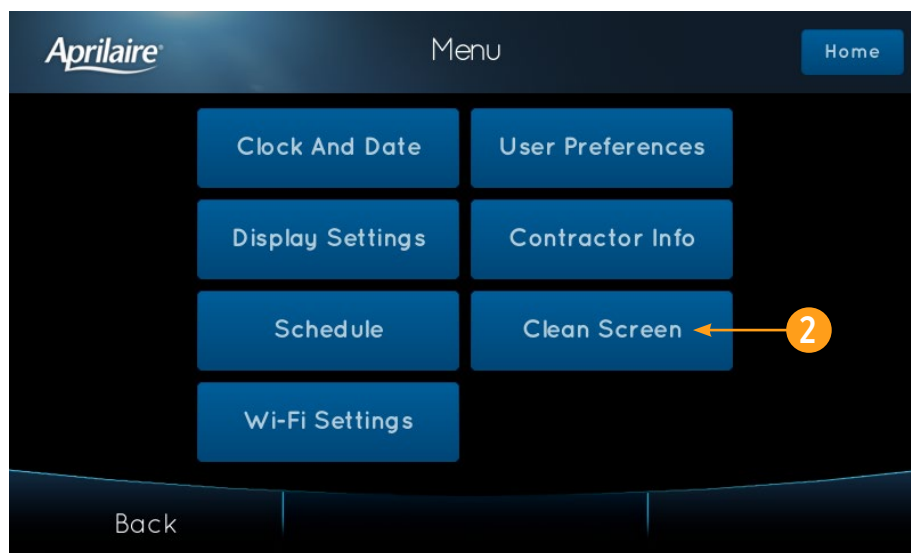
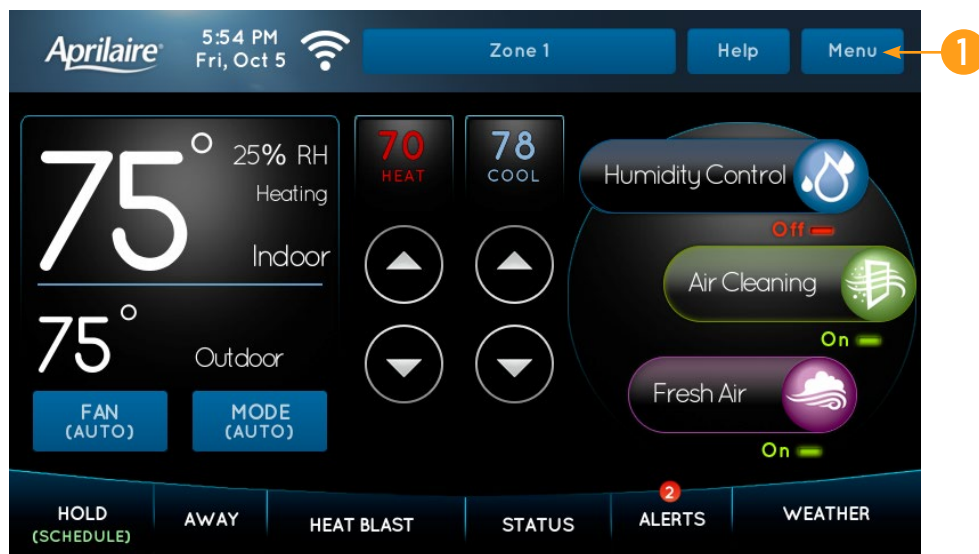
1. Touch **Schedule Settings** to open the Schedule Settings screen.
2. Select **Off** to disable the schedule. The control will maintain its current setpoints indefinitely or until you set a new temperature. Hold modes will not be available as long as the schedule remains off. Select **On** to re-enable the schedule. The control will resume its schedule at the appropriate point for the current time and day.
3. Touch **Done** to save any changes. Touch **Back** to discard any changes.



## CLEAN SCREEN

The touch screen can be temporarily disabled in order to clean it. Use a damp cloth with water or household glass cleaner. Do not spray liquids directly on the screen.

1. Touch **Menu** to open the Menu screen.
2. Touch **Clean Screen** to disable the touch screen for 30 seconds. The control will return to the Menu screen when the timer finishes.



This screen will timeout in

28

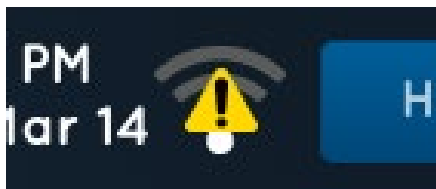
## WI-FI MAINTENANCE AND TROUBLESHOOTING

### WI-FI STATUS INDICATOR



**Connected, operating normally.**

You should have one to four bars.



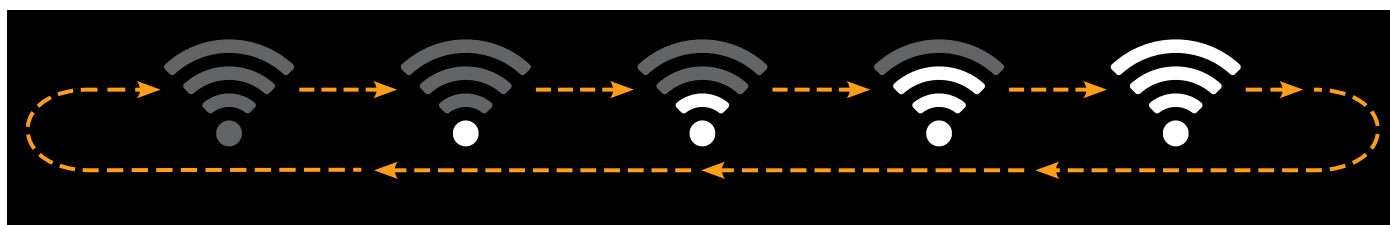
**Internet connection lost.**

System is connected to the access point/router, but not the internet.



**Wi-Fi connection lost.**

System is not connected to the Wi-Fi access point/router.



**Strobing icon.**

System has not been configured to be used with a Wi-Fi network or the settings have been cleared as described on page 38.

If your viewer supports multimedia animation, click on the icon below that matches your preferred animation filetype.

A plug-in may be required for some PDF viewers.



QuickTime



MP4

# WI-FI MAINTENANCE AND TROUBLESHOOTING

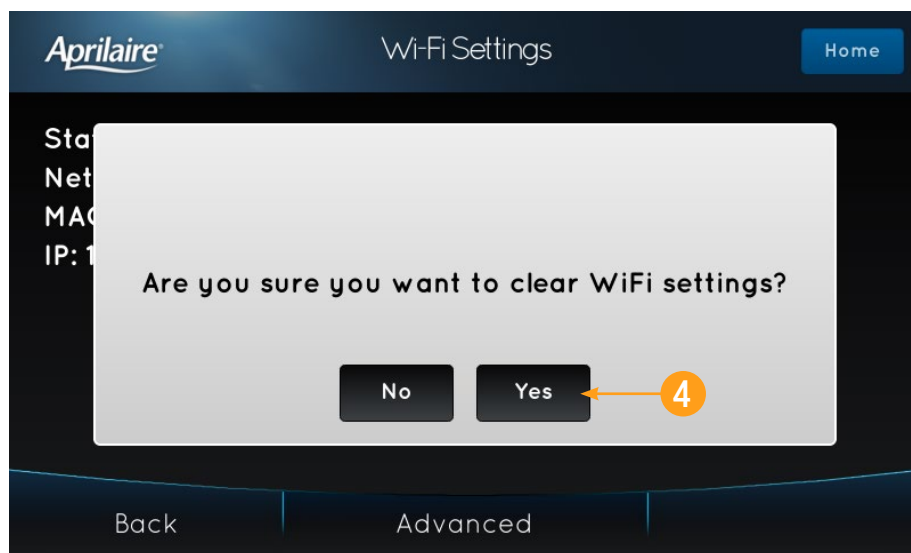
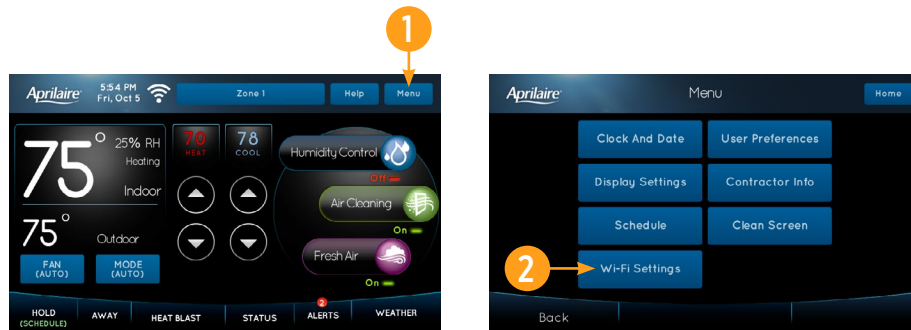
## CLEARING ROUTER SETTINGS

If you purchase a new Wi-Fi router or change the security settings on your existing router, the router settings in the control need to be cleared so the new Wi-Fi router settings can be entered.

### To clear router settings:

1. Touch **Menu** to open the Menu screen.
2. Touch **Wi-Fi Settings** to open the Wi-Fi Settings screen.
3. Touch **Wi-Fi Disconnect & Clear Settings** to clear all Wi-Fi settings in the control. This will not remove the system from your User Account.  
You will be prompted to confirm your choice.
4. Touch **Yes** to continue. Touch **No** to return to the Wi-Fi Settings screen without clearing the Wi-Fi settings.

Refer to pages 4-9 for instructions on connecting the system to your Wi-Fi network.



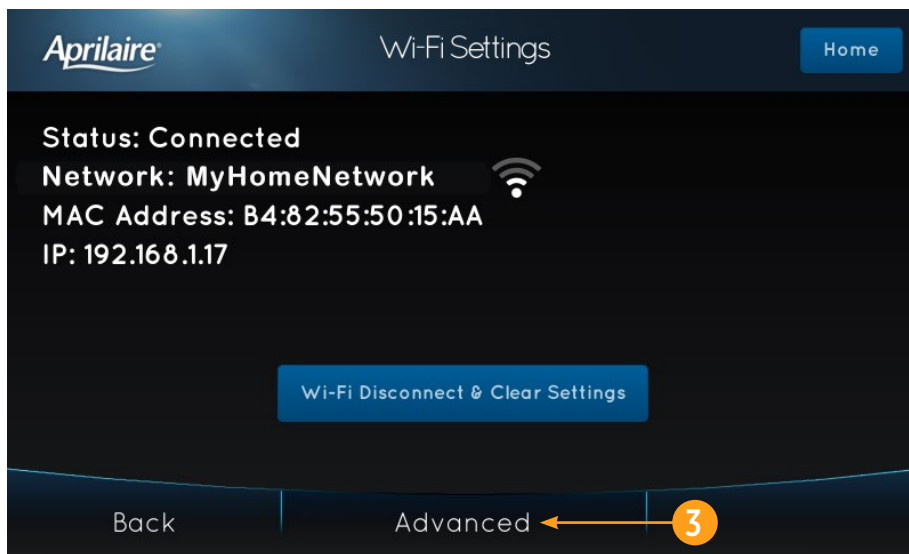
# WI-FI MAINTENANCE AND TROUBLESHOOTING

## REMOVING THE SYSTEM FROM A USER ACCOUNT

This system can only be registered to one User Account. If this system has previously been registered to an account that is no longer active or no longer applicable to this home, it will need to be unregistered before it can be added to a new User Account. The system must have internet access through your router in order to be unregistered.

1. Touch **Menu** to open the Menu screen.
2. Touch **Wi-Fi Settings** to open the Wi-Fi Setting screen.
3. Touch **Advanced** to open the Wi-Fi Advanced screen.
4. Touch **Unregister** to remove the system from a User Account. Your Wi-Fi settings will not be changed.

This will remove the system from any account to which it is currently registered. Refer to page 4 (iOS) or page 7 (Android) for instructions on registering the system to a new User Account.



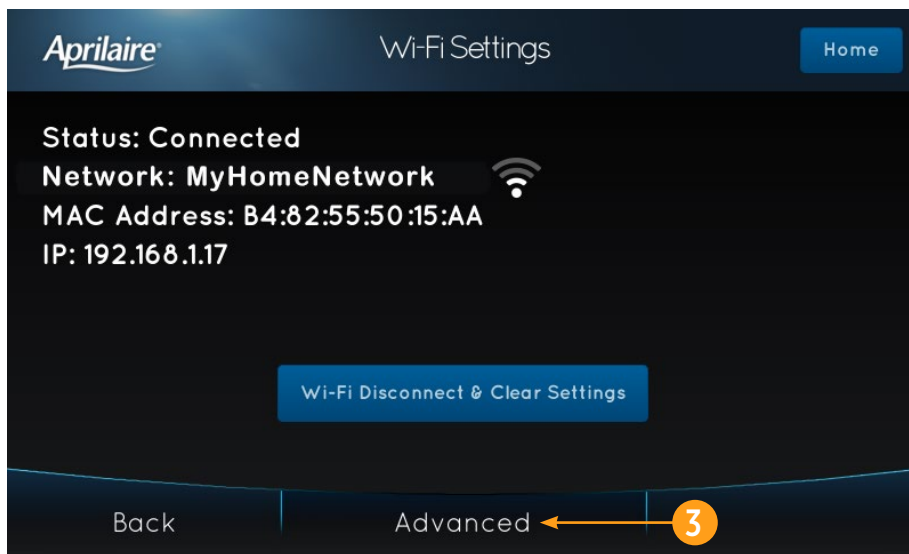
# WI-FI MAINTENANCE AND TROUBLESHOOTING

## DISABLING THE WI-FI RADIO

The Wi-Fi radio can be manually disabled while maintaining all other network settings.

### To disable the control's Wi-Fi radio:

1. Touch **Menu** to open the Menu screen.
2. Touch **Wi-Fi Settings** to open the Wi-Fi Settings screen.
3. Touch **Advanced** to open the Wi-Fi Advanced screen.
4. Touch **Off** to disable the Wi-Fi radio.  
Touch **On** to re-enable the Wi-Fi radio.





## FIVE YEAR LIMITED WARRANTY

Your Research Products Corporation Aprilaire® Zoned Comfort Control® is expressly warranted for five (5) years from date of installation to be free from defects in materials or workmanship. Research Products Corporation's exclusive obligation under this warranty shall be to supply, without charge, a replacement for any component which is found to be defective within such five (5) year period and which is returned, together with the date of installation, no later than thirty (30) days after said five (5) year period by you to either your original supplier or to Research Products Corporation, Madison, Wisconsin 53701.

THIS WARRANTY SHALL NOT OBLIGATE RESEARCH PRODUCTS CORPORATION FOR ANY LABOR COSTS AND SHALL NOT APPLY TO DEFECTS IN WORKMANSHIP OR MATERIALS FURNISHED BY YOUR INSTALLER AS CONTRASTED TO DEFECTS IN THE ZONE CONTROL ITSELF.

IMPLIED WARRANTIES OF MERCHANTABILITY OF FITNESS FOR A PARTICULAR PURPOSE SHALL BE LIMITED IN DURATION TO THE AFORESAID FIVE YEAR PERIOD. RESEARCH PRODUCTS CORPORATION'S LIABILITY FOR INCIDENTAL OR CONSEQUENTIAL DAMAGES, OTHER THAN DAMAGES FOR PERSONAL INJURIES, RESULTING FROM ANY BREACH OF THE AFORESAID IMPLIED WARRANTIES OR THE ABOVE LIMITED WARRANTY IS EXPRESSLY EXCLUDED. THIS LIMITED WARRANTY IS VOID IF DEFECT(S) RESULT FROM FAILURE TO HAVE THIS SYSTEM INSTALLED BY A QUALIFIED HEATING AND AIR CONDITIONING CONTRACTOR. IF THE LIMITED WARRANTY IS VOID DUE TO FAILURE TO USE A QUALIFIED CONTRACTOR, ALL DISCLAIMERS OF IMPLIED WARRANTIES SHALL BE EFFECTIVE UPON INSTALLATION.

Some states do not allow limitations on how long an implied warranty lasts or the exclusion or limitation of incidental or consequential damages, so the above exclusions or limitations may not apply to you.

This warranty gives you specific legal rights and you may also have other rights which vary from state to state.

### WARRANTY REGISTRATION

---

Visit us online at [www.aprilaire.com](http://www.aprilaire.com) to register your Aprilaire product. If you do not have online access, please mail a postcard with your name, address, phone number, email address, product purchased, model number, date of purchase, and dealer name and address to: Research Products Corporation, P.O. Box 1467, Madison, WI 53701.

**Your warranty registration information will not be sold or shared outside of this company.**

## FCC DECLARATION

### Compliance Statement (Part 15.19)

This device complies with Part 15 of the FCC Rules. Operation is subject to the following two conditions:

1. This device may not cause harmful interference, and
2. This device must accept any interference received, including interference that may cause undesired operation.

### Warning (Part 15.21)

Changes or modifications not expressly approved by the party responsible for compliance could void the user's authority to operate the equipment.

### FCC Interference Statement (Part 15.105 (b))

This equipment has been tested and found to comply with the limits for a Class B digital device, pursuant to Part 15 of the FCC Rules. These limits are designed to provide reasonable protection against harmful interference in a residential installation. This equipment generates uses and can radiate radio frequency energy and, if not installed and used in accordance with the instructions, may cause harmful interference to radio communications. However, there is no guarantee that interference will not occur in a particular installation. If this equipment does cause harmful interference to radio or television reception, which can be determined by turning the equipment off and on, the user is encouraged to try to correct the interference by one of the following measures:

- Reorient or relocate the receiving antenna.
- Increase the separation between the equipment and receiver.
- Connect the equipment into an outlet on a circuit different from that to which the receiver is connected.
- Consult the dealer or an experienced radio/TV technician for help.

### FCC RF Radiation Exposure statement

To comply with FCC/IC RF exposure limits for general population / uncontrolled exposure, the antenna(s) used for this transmitter must be installed to provide a separation distance of at least 20 cm from all persons and must not be co-located or operating in conjunction with any other antenna or transmitter.

## IC STATEMENT

### RSS-GEN, Sec. 7.1.2

Under Industry Canada regulations, this radio transmitter may only operate using an antenna of a type and maximum (or lesser) gain approved for the transmitter by Industry Canada. To reduce potential radio interference to other users, the antenna type and its gain should be so chosen that the equivalent isotropically radiated power (e.i.r.p.) is not more than that necessary for successful communication.

Conformément à la réglementation d'Industrie Canada, le présent émetteur radio peut fonctionner avec une antenne d'un type et d'un gain maximal (ou inférieur) approuvé pour l'émetteur par Industrie Canada. Dans le but de réduire les risques de brouillage radioélectrique à l'intention des autres utilisateurs, il faut choisir le type d'antenne et son gain de sorte que la puissance isotrope rayonnée équivalente (p.i.r.e.) ne dépasse pas l'intensité nécessaire à l'établissement d'une communication satisfaisante.

### RSS-GEN, Sec. 7.1.3

Operation is subject to the following two conditions:

- (1) this device may not cause interference, and
- (2) this device must accept any interference, including interference that may cause undesired operation of the device.

L'exploitation est autorisée aux deux conditions suivantes:

- (1) l'appareil ne doit pas produire de brouillage, et
- (2) l'utilisateur de l'appareil doit accepter tout brouillage radioélectrique subi, même si le brouillage est susceptible d'en compromettre le fonctionnement.

### Aprilaire.com

P.O. Box 1467

Madison, WI 53701-1467

800.545.2219 F: 608.257.4357

U.S. Patent Numbers 8,146,376, 8,596,078 and other patents pending

©2018 Aprilaire - Division of Research Products Corporation

10013780 B2208419A 1.19

The logo for Aprilaire, featuring the brand name in a stylized blue font with a registered trademark symbol.

Trusted Solutions for a Healthy Home™