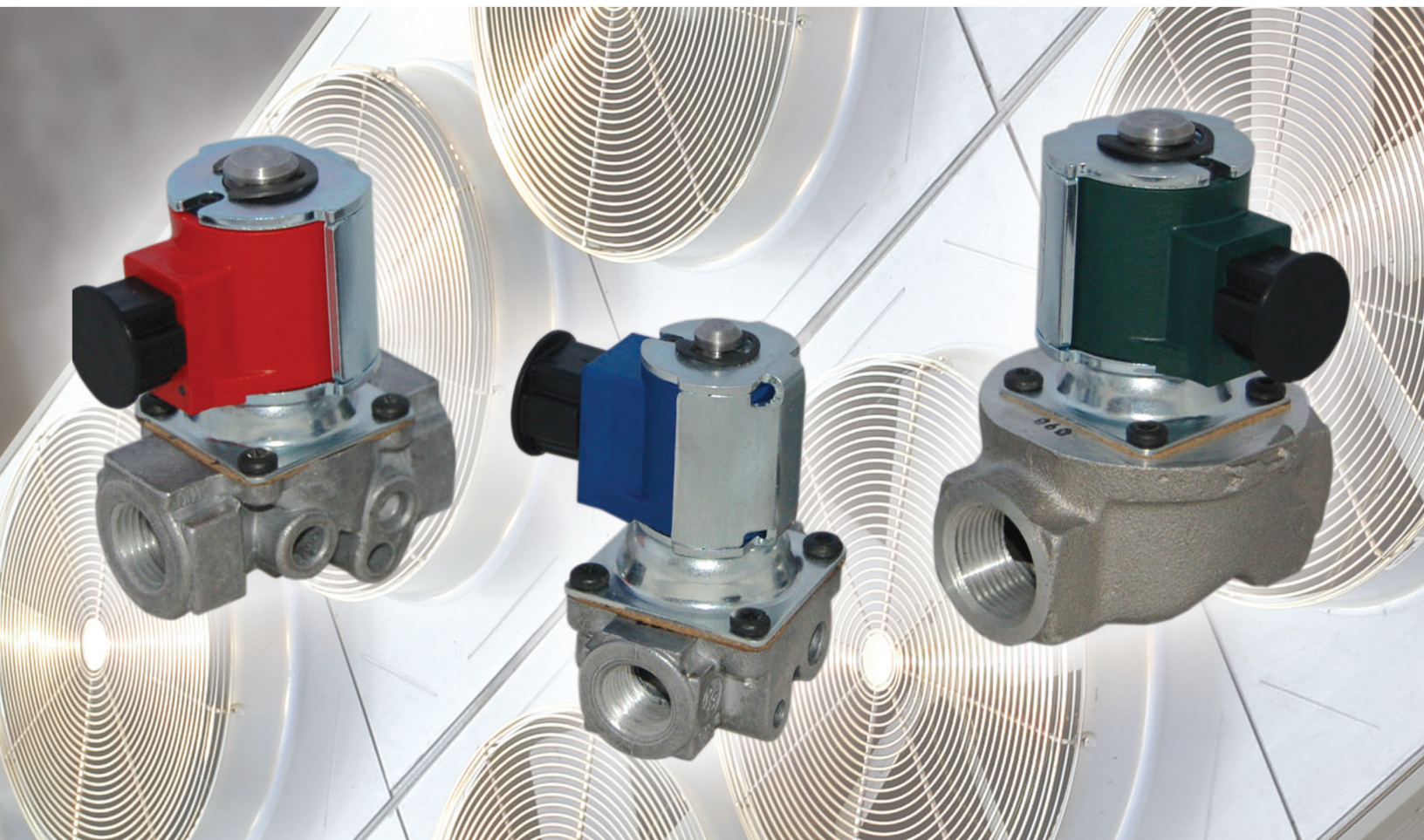




BGA Series Single Solenoid

A "NEW" rugged design
for Commercial/Industrial Application

BASO Gas Products LLC



- ✓ The BGA Series safety valves are "Normally closed" with fast open and close operation.
- ✓ Temperature ranges: -20°F to 175°F (-29°C to 79°C)
- ✓ Applications for an array of Industrial and Commercial uses including heaters, wall furnaces, cooking equipment, roof top units, and boilers.
- ✓ For use with gas types: Natural, LP (liquefied petroleum), and manufactured.

**To learn more about the BASO BGA Series contact:
BASO Gas Products LLC • 1007 South 12th Street, Watertown, Wisconsin 53094
Phone: 877-227-6427 or visit www.baso.com**

Class A - Model BGA158

Features:

Operating Pressure: 2.0 psi (138 mbar)
Pipe Connections: 1/8", 1/4", 3/8", 1/2" NPT and RP threads
Electrical ratings: 12VDC, 25VDC, 25VAC 50/60 Hz, 120VAC 50/60 Hz, and 240VAC 50/60 Hz
Agency Approvals: CSA and CE.
Taps available: Pressure and Pilot

Class B - Model BGA158

Features:

Operating Pressure: 0.5 psi (50 mbar)
Pipe Connections: 1/8", 1/4", 3/8" NPT and 1/8", 1/4", 3/8" RP threads
Electrical ratings: 12VDC, 25VDC, 25VAC 50/60 Hz, 120VAC 50/60 Hz, and 240VAC 50/60 Hz
Agency Approvals: CSA and CE. (Underwriter Laboratories pending)
Taps available: Pressure and Pilot

Class B - Model BGA171

Features:

Operating Pressure: 0.5 psi (100 mbar)
Pipe Connections: 1/2" and 3/4" NPT and 1/2" RP threads
Electrical ratings: 12VDC, 25VDC, 25VAC 50/60 Hz, 120VAC 50/60 Hz, and 240VAC 50/60 Hz
Agency Approvals: CSA and CE. (Underwriter Laboratories pending)
Taps available: Pressure and Pilot

Model BGA171

Features:

Operating Pressure: 0.5 psi (50 mbar)
Pipe Connections: 1/2" and 3/4" NPT threads
Electrical ratings: 12VDC, 25VDC, 25VAC 50/60 Hz, 120VAC 50/60 Hz, and 240VAC 50/60 Hz
Agency Approvals: CSA and (Underwriter Laboratories pending)
Taps available: Pressure and Pilot

Model BGA110

Features:

Operating Pressure: 0.5 psi (50 mbar)
Pipe Connections: 3/4" and 1.00" NPT threads
Electrical ratings: 12VDC, 25VDC, 25VAC 50/60 Hz, 120VAC 50/60 Hz, and 240VAC 50/60 Hz
Agency Approvals: CSA and (Underwriter Laboratories pending)
Taps available: Pressure and Pilot