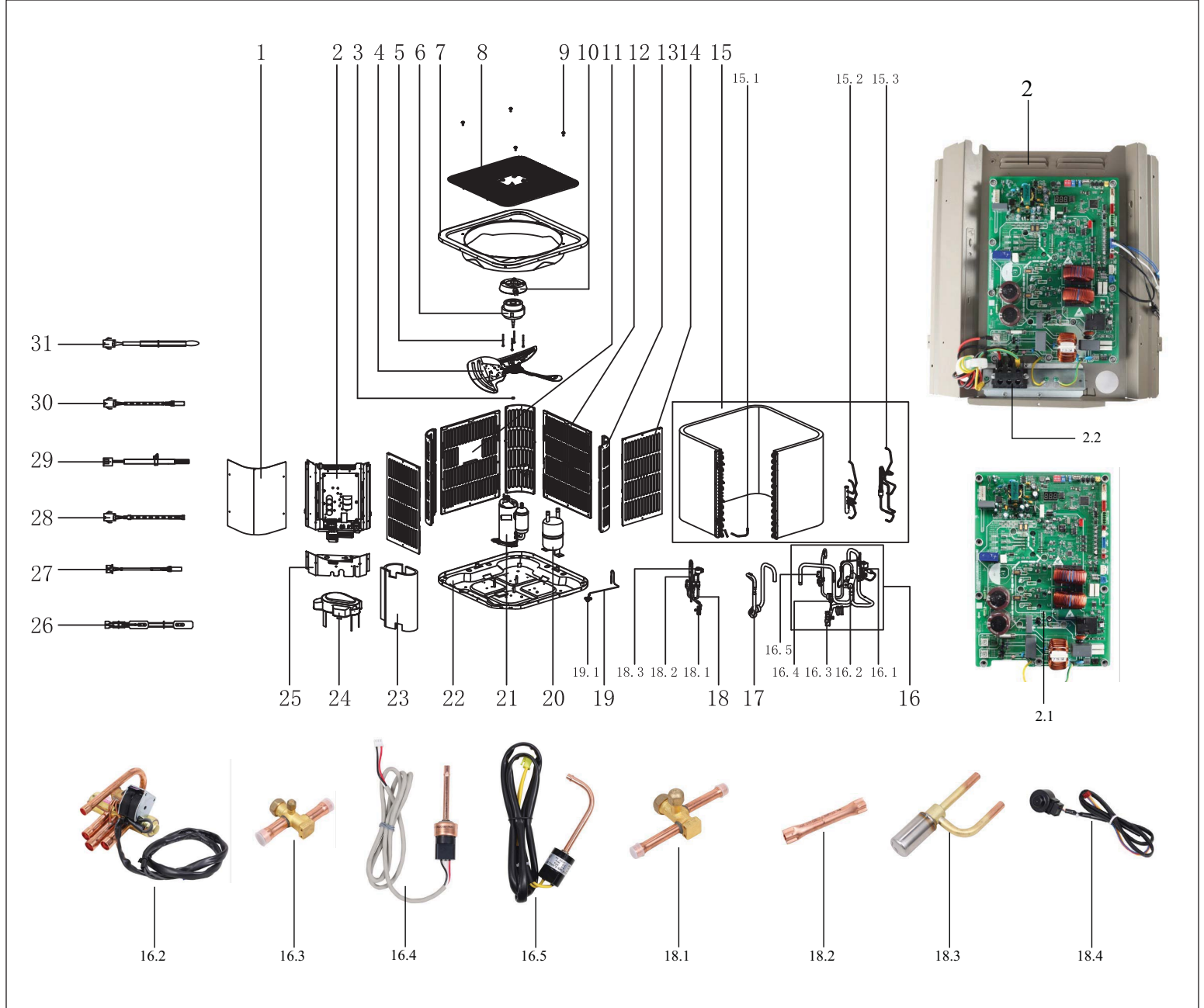


Bosch IDS 2.0 BOVA-36 & BOVA-60 Split System Heat Pump

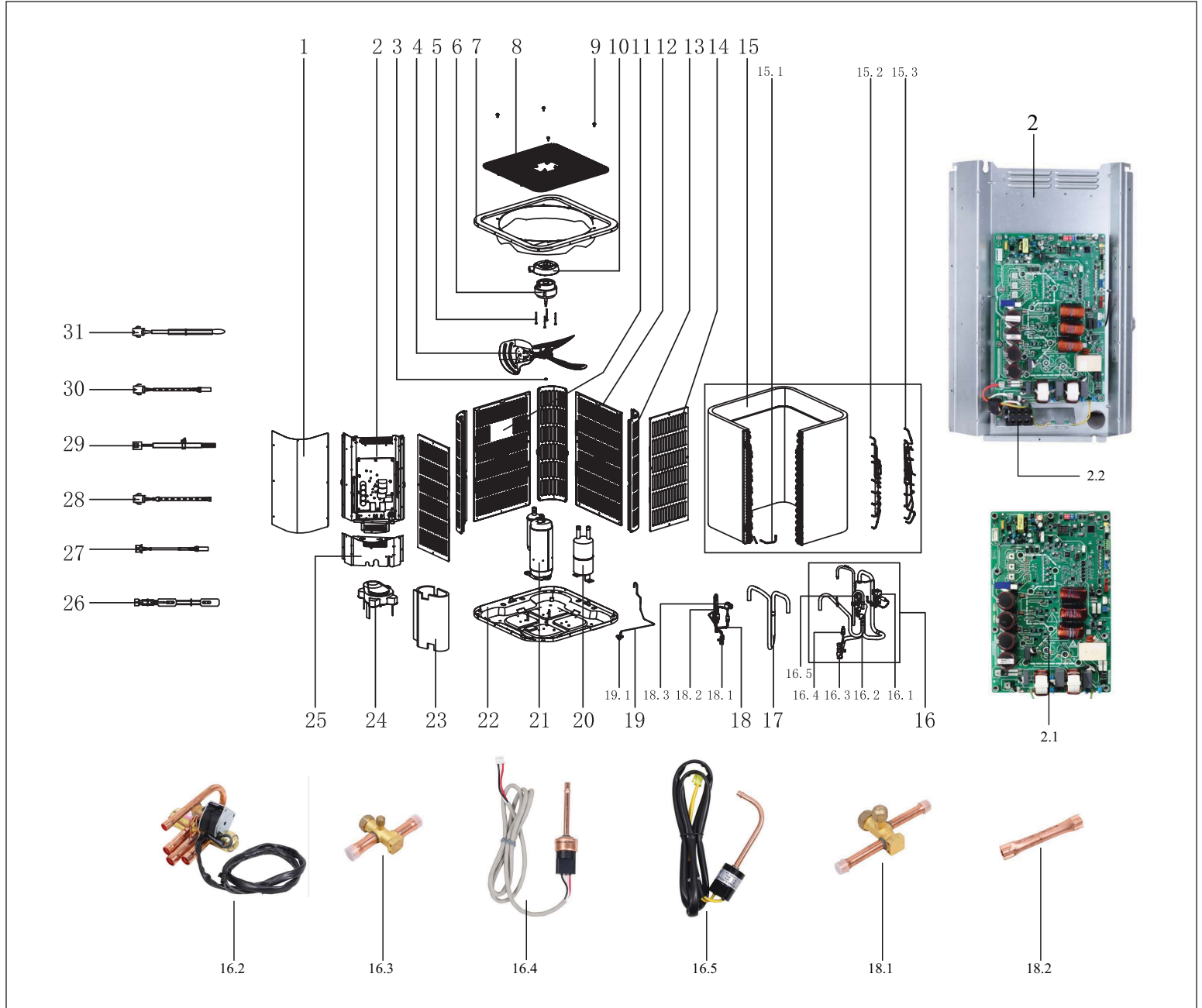
3 Ton Capacity



Pos.	Description	Qty	Ordering no.	BOVA-36 (3 Ton)	Recommended Stock	Remarks
1	Service Access Panel	1.0	8733953145	■		
2	Control Board Assembly	1.0	8733953146	■	✓	
2.1	Outdoor Control Board	1.0	8733953147	■		
2.1.1	Control Board Temperature Sensor (Tf) (Image not shown. Located behind control board.)	1.0	8733948339	■		
2.2	High Voltage Terminal Block	1.0	8733953148	■		
3	Nuts for outdoor fan	1.0	8733941801	■		
4	Fan Blade	1.0	8733941802	■	✓	
5	Motor Mounted Bolt	4.0	8733941845	■		
6	Outdoor ECM Motor	1.0	8733953149	■	✓	
7	Top Cover Assembly	1.0	8733953150	■		
8	Top Cover Grate	1.0	8733941805	■		
9	Top Cover Grate Bolts	4.0	8733941806	■		
10	Motor Installation Board Ass'y	1.0	8733941847	■	✓	
11	Side Coil Guard (with Bosch logo)	1.0	8733954147	■		
12	Side Louver Panel 1	2.0	8733953151	■		
13	Round Louver Panel	3.0	8733953152	■		
14	Side Louver Panel 2	2.0	8733953153	■		
15	Condenser Coil Assembly	1.0	8733953154	■		
15.1	Condenser Transition Pipe	1.0	8733941814	■		
15.2	Condenser Input Assembly	1.0	8733953155	■		
15.3	Condenser Output Assembly	1.0	8733953156	■		
16	Reversing Valve System Assembly	1.0	8733953157	■	✓	
16.1	Pressure Equalizer Valve (PEV)	1.0	8733953158	■	✓	
16.2	Reversing Valve	1.0	8733953159	■	✓	
16.3	Suction Valve	1.0	8733941819	■	✓	
16.4	Pressure Transducer	1.0	8733953160	■	✓	
16.5	High Pressure Switch	1.0	8733941857	■	✓	
17	Suction Pipe Assembly	1.0	8733953161	■		
18	High Pressure Valve Assembly	1.0	8733953162	■	✓	
18.1	Liquid Valve	1.0	8733941822	■	✓	
18.2	Check Valve	1.0	8733941823	■	✓	
18.3	EEV Body	1.0	8733941824	■	✓	
18.4	EEV Solenoid	1.0	8733941825	■		
19	Gauge Port Assembly	1.0	8733953163	■		
19.1	Gauge Port	1.0	8733941827	■		
20	Accumulator	1.0	8733953164	■		
21	DC Inverter Compressor	1.0	8733953165	■	✓	
22	Base Pan	1.0	8733953166	■		
23	Compressor Insulation	1.0	8733953167	■		
24	Compressor Rubber Cap	1.0	8733941831	■		
25	Service Port Access Panel	1.0	8733953168	■		
26	Crankcase Heater	1.0	8733953169	■		
27	Compressor Return Temperature Sensor (Th)	1.0	8733953170	■	✓	
28	Liquid Line Temperature Sensor (T3L)	1.0	8733953171	■	✓	
29	Compressor Discharge Temperature Sensor (T5)	1.0	8733953172	■	✓	
30	Outdoor Coil Temperature Sensor (T3)	1.0	8733953173	■	✓	
31	Ambient Temperature Sensor (T4)	1.0	8733953174	■	✓	
Bosch IDS 2.0 BOVA-36HDN1-M20G Split System Heat Pump 2-3 Ton Capacity						

Bosch IDS 2.0 BOVA-36 & BOVA-60 Split System Heat Pump

5 Ton Capacity



BOSCH

Pos.	Description	Qty	Ordering no.	BOVA-60 (5 Ton)	Recommended Stock	Remarks
1	Service Access Panel	1.0	8733953175	■		
2	Control Board Assembly	1.0	8733953176	■	✓	
2.1	Outdoor Control Board	1.0	8733953177	■		
2.1.1	Control Board Temperature Sensor (Tf) (Image not shown. Located behind control board.)	1.0	8733948339	■		
2.2	High Voltage Terminal Block	1.0	8733953148	■		
3	Nuts for outdoor fan	1.0	8733941801	■		
4	Fan blade	1.0	8733953178	■	✓	
5	Motor Mounted Bolt	4.0	8733941845	■		
6	Outdoor ECM Motor	1.0	8733953149	■	✓	
7	Top Cover Assembly	1.0	8733953150	■		
8	Top Cover Grate	1.0	8733941805	■		
9	Top Cover Grate Bolts	4.0	8733941806	■		
10	Motor Installation Board Ass'y	1.0	8733941847	■	✓	
11	Side Coil Guard (with Bosch logo)	1.0	8733954148	■		
12	Side Louver Panel 1	2.0	8733953179	■		
13	Round Louver Panel	3.0	8733953180	■		
14	Side Louver Panel 2	2.0	8733953181	■		
15	Condenser Coil Assembly	1.0	8733953182	■		
15.1	Condenser Transition Pipe	1.0	8733941814	■		
15.2	Condenser Input Assembly	1.0	8733953185	■		
15.3	Condenser Output Assembly	1.0	8733953186	■		
16	Reversing Valve System Assembly	1.0	8733953187	■	✓	
16.1	Pressure Equalizer Valve (PEV)	1.0	8733953158	■	✓	
16.2	Reversing Valve	1.0	8733953159	■	✓	
16.3	Suction Valve	1.0	8733941858	■	✓	
16.4	Pressure transducer	1.0	8733953160	■	✓	
16.5	High pressure switch	1.0	8733941857	■	✓	
17	Suction pipe assembly	1.0	8733953188	■		
18	High Pressure Valve Assembly	1.0	8733941860	■	✓	
18.1	Liquid Valve	1.0	8733941822	■	✓	
18.2	Check Valve	1.0	8733941823	■	✓	
18.3	EEV Assembly	1.0	8733953189	■	✓	
19	Gauge Port Assembly	1.0	8733953190	■		
19.1	Gauge Port	1.0	8733941827	■		
Bosch IDS 2.0 BOVA-60HDN1-M20G Split System Heat Pump 5 Ton Capacity						

Pos.	Description	Qty	Ordering no.	BOVA-60 (5 Ton)	Recommended Stock	Remarks
20	Accumulator	1.0	8733953191	■		
21	DC Inverter compressor	1.0	8733953192	■	✓	
22	Base Pan	1.0	8733953166	■		
23	Compressor Insulation	1.0	8733953193	■		
24	Compressor Rubber Cap	1.0	8733941831	■		
25	Service Port Access Panel	1.0	8733953194	■		
26	Crankcase Heater	1.0	8733941866	■		
27	Compressor Return Temperature Sensor (Th)	1.0	8733953170	■	✓	
28	Liquid Line Temperature Sensor (T3L)	1.0	8733953195	■	✓	
29	Compressor Discharge Temperature Sensor (T5)	1.0	8733953172	■	✓	
30	Outdoor Coil Temperature Sensor (T3)	1.0	8733953173	■	✓	
31	Ambient Temperature Sensor (T4)	1.0	8733953174	■	✓	
Bosch IDS 2.0						
BOVA-60HDN1-M20G Split System Heat Pump						
5 Ton Capacity						