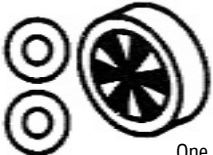


# DE693 Dryer Roller Kit Instruction Sheet

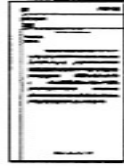
Replaces Maytag 12001541 & 303373

## Contents:



Two  
Non-metallic  
Washers

One  
DE693  
Dryer Roller



One  
Instruction Sheet

The purpose of this instruction sheet is to inform the service technician the metal wave washer has been removed from the kit and replaced with an additional non-metallic washer. If the original dryer has a metal wave washer on the roller shaft, please discard and replace with the non-metallic washer in the kit.

## Procedure:

1. Disconnect power to the dryer prior to servicing.
2. Remove the front panel of the dryer.
3. Remove the front shroud assembly.
4. Remove the tumbler and belt.
5. Remove the snap ring from the roller shaft. Slide the washers and roller off the shaft.
6. Place a non-metallic washer onto the shaft, then the roller and the other non-metallic washer. Put snap ring (not included) on the shaft.



**Sealed Unit Parts Co., Inc.**  
2230 Landmark Place • Allenwood, NJ 08720  
(732)223-6644 • Fax: (732)223-1617  
www.supco.com • info@supco.com  
P/N 19263 Rev. 01132011

# DE693 Dryer Roller Kit Instruction Sheet

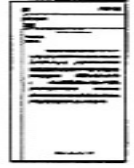
Replaces Maytag 12001541 & 303373

## Contents:



Two  
Non-metallic  
Washers

One  
DE693  
Dryer Roller



One  
Instruction Sheet

The purpose of this instruction sheet is to inform the service technician the metal wave washer has been removed from the kit and replaced with an additional non-metallic washer. If the original dryer has a metal wave washer on the roller shaft, please discard and replace with the non-metallic washer in the kit.

## Procedure:

1. Disconnect power to the dryer prior to servicing.
2. Remove the front panel of the dryer.
3. Remove the front shroud assembly.
4. Remove the tumbler and belt.
5. Remove the snap ring from the roller shaft. Slide the washers and roller off the shaft.
6. Place a non-metallic washer onto the shaft, then the roller and the other non-metallic washer. Put snap ring (not included) on the shaft.



**Sealed Unit Parts Co., Inc.**  
2230 Landmark Place • Allenwood, NJ 08720  
(732)223-6644 • Fax: (732)223-1617  
www.supco.com • info@supco.com  
P/N 19263 Rev. 01132011

# DE693 Dryer Roller Kit Instruction Sheet

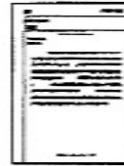
Replaces Maytag 12001541 & 303373

## Contents:



Two  
Non-metallic  
Washers

One  
DE693  
Dryer Roller



One  
Instruction Sheet

The purpose of this instruction sheet is to inform the service technician the metal wave washer has been removed from the kit and replaced with an additional non-metallic washer. If the original dryer has a metal wave washer on the roller shaft, please discard and replace with the non-metallic washer in the kit.

## Procedure:

1. Disconnect power to the dryer prior to servicing.
2. Remove the front panel of the dryer.
3. Remove the front shroud assembly.
4. Remove the tumbler and belt.
5. Remove the snap ring from the roller shaft. Slide the washers and roller off the shaft.
6. Place a non-metallic washer onto the shaft, then the roller and the other non-metallic washer. Put snap ring (not included) on the shaft.



**Sealed Unit Parts Co., Inc.**  
2230 Landmark Place • Allenwood, NJ 08720  
(732)223-6644 • Fax: (732)223-1617  
www.supco.com • info@supco.com  
P/N 19263 Rev. 01132011

# DE693 Dryer Roller Kit Instruction Sheet

Replaces Maytag 12001541 & 303373

## Contents:



Two  
Non-metallic  
Washers

One  
DE693  
Dryer Roller



One  
Instruction Sheet

The purpose of this instruction sheet is to inform the service technician the metal wave washer has been removed from the kit and replaced with an additional non-metallic washer. If the original dryer has a metal wave washer on the roller shaft, please discard and replace with the non-metallic washer in the kit.

## Procedure:

1. Disconnect power to the dryer prior to servicing.
2. Remove the front panel of the dryer.
3. Remove the front shroud assembly.
4. Remove the tumbler and belt.
5. Remove the snap ring from the roller shaft. Slide the washers and roller off the shaft.
6. Place a non-metallic washer onto the shaft, then the roller and the other non-metallic washer. Put snap ring (not included) on the shaft.



**Sealed Unit Parts Co., Inc.**  
2230 Landmark Place • Allenwood, NJ 08720  
(732)223-6644 • Fax: (732)223-1617  
www.supco.com • info@supco.com  
P/N 19263 Rev. 01132011