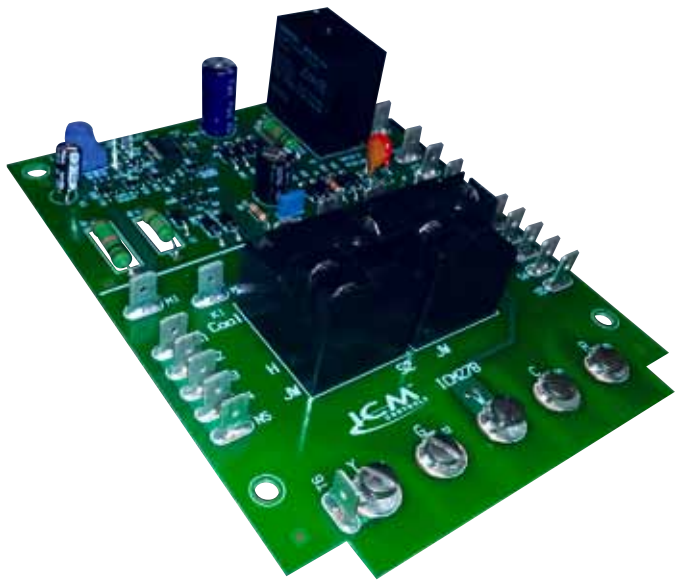


ICM278 FAN CONTROL BOARD



Features

- Controls blower motor and inducer
- Combines functionality of two boards into one
- Microprocessor-based precision
- Adjustable blower off delay
- Compatible with 24 VAC standard thermostats



Mode of Operation

When power is applied, the ICM278 turns on the heat blower for the blower off delay. When a G call is issued, the blower turns on. When it is removed, the blower turns off after a fixed delay. When a W call is issued, the inducer fan turns on. When the W2 signal is received, the heat blower turns on after a delay. When the W2 signal is removed, the blower stays on for the variable heat delay.

Specifications

- **Input Voltage**
 - Terminals: N1-N5, S1-S5, H, L, L1, D1 120/240 VAC
 - Terminals: Y, G, W, C, R, W2, X, HL, PS1, PS2 18-30 VAC
- **Line Frequency** 60 Hz
- **Operating Temperature** -40°F to +176°F
- **Maximum Operating Humidity** 95% R.H. Non-condensing @ 50°C
- **Time Delays**
 - Heat **ON** 60 Seconds
 - Heat **OFF** 60-200 Seconds
 - Cool **OFF** 40 Seconds

Replaces

- Carrier HH84AA017 and HH84AA018 (replaces both boards together)