



Sensors – High Pressure

Series 750B-C3 Chamber with 3 Probes

Series 750B-C4 Chamber with 4 Probes

Specifications Chamber

- NEMA 4X chamber enclosure  and  listed
- Maximum steam pressure 250 psig (17.6 kg/cm²)
- Designed for use with a remotely mounted controller to make a complete system for level control in a boiler or other vessel.

Ordering Information

| Model Number | Part Number | Description | Weight lbs. (kg) |
|--------------|-------------|------------------------------|------------------|
| 750B-C3 | 176316 | Cast iron chamber w/3 probes | 26 (11.8) |
| 750B-C4 | 176317 | Cast iron chamber w/4 probes | 26 (11.8) |

Probe Rods

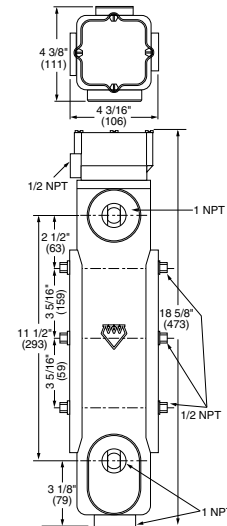
- Stainless steel - Series 316 material
- PTFE coated probe ends provide protection from false signals [available on 24-72" (610 - 1829mm) probes]
- For use with RS sensors

Ordering Information

| Model Number | Part Number | Description | Weight lbs. (kg) |
|--------------|-------------|---------------------------|------------------|
| G-2-SS | 179156 | 24" (610mm) Ground Probe | 1.0 (.5) |
| G-3-SS | 179157 | 36" (914mm) Ground Probe | 1.5 (.7) |
| G-4-SS | 179158 | 48" (1219mm) Ground Probe | 2.0 (.9) |
| G-5-SS | 179159 | 60" (1524mm) Ground Probe | 2.5 (1.1) |
| G-6-SS | 179160 | 72" (1829mm) Ground Probe | 3.0 (1.4) |
| P-1/3 SS | 176208 | 4 1/2" (114mm) Probe | 0.5 (.23) |
| P-1-SS | 179530 | 12" (305mm) Probe | 0.5 (.23) |
| P-2-SS | 179535 | 24" (610mm) Probe w/PTFE | 1.0 (.5) |
| P-3-SS | 179540 | 36" (914mm) Probe w/PTFE | 1.5 (.7) |
| P-4-SS | 179545 | 48" (1219mm) Probe w/PTFE | 2.0 (.9) |
| P-5-SS | 179550 | 60" (1524mm) Probe w/PTFE | 2.5 (1.1) |
| P-6-SS | 179555 | 72" (1829mm) Probe w/PTFE | 3.0 (1.4) |



Remote Chamber



Liquid Level Controls



P-SS Probes

PTFE Coating



G-SS Probes

Selecting control according to anticipated use, the sensor should be selected according to the number of probes required. The probe rods are ordered separately according to length needed. The control, sensor and each probe rod must be specified separately, using the appropriate model and part numbers.