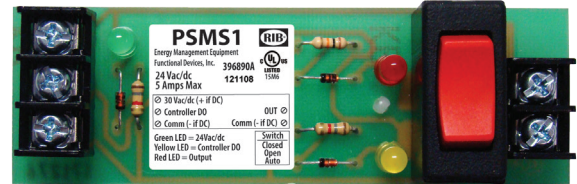
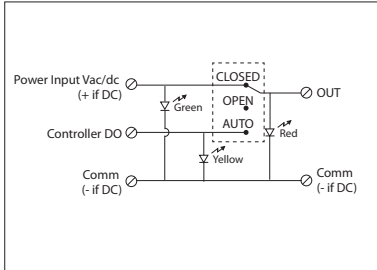


PREPACKAGED SWITCH

PSMS1

4.000" Track Mount Switch 5 Amp, 30 Vac/dc,
3 Position Maintained



SPECIFICATIONS

Operating Temperature: -30 to 140° F

Humidity Range: 5 to 95% (noncondensing)

Dimensions: 1.275" x 4.000" x 1.750"

Track Mount: 4.000", See MT4 Series on page 152

MT4 Mounting Track Sold Separately

Switch Status: Green LED On = Power Input present

Yellow LED On = Controller DO ON

Red LED On = Output Signal ON

Approvals: UL Listed, UL916, C-UL, CE, RoHS

Switch Ratings:

5 Amp @ 30 Vac/dc