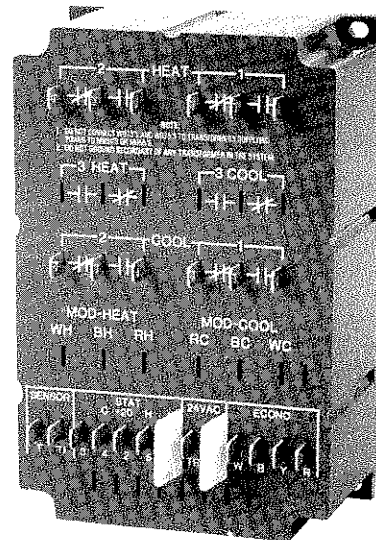


Honeywell

THE W973 SOLID STATE ENERGY MANAGEMENT SYSTEM CONTROLS HEATING, COOLING, AND ECONOMIZER OPERATION IN COMMERCIAL AIR CONDITIONING EQUIPMENT.

- Panels can be used with staged gas, oil or electric heat; modulating gas, hot water, or steam heat; and direct expansion or modulating chilled water cooling.
- Integrated economizer provided as the first stage of cooling in all models.
- Positive modulating low limit starts to close economizer motor to minimum position if discharge air temperature drops below factory-set temperature of 62 F [17 C]. Motor will be at minimum position when discharge temperature is 50 F [10 C].
- W973 balances system output against space load demand to maintain stable room temperature with minimum temperature swing.
- Load reactive time delays provided by T7067 ensure stable system performance.
- System recycles to all stages off on power interruption. When power is restored, system sequences stages back on with a time delay between stages.
- Compact to fit easily in air conditioning equipment control panel.
- Quarter in. male quick-connect terminals provided for wiring connections.
- Pilot duty spdt relays control on-off heating and cooling stages.
- Modulating dc current signal controls economizer and valve motors.
- T7067 solid state dual set point thermostat located in the controlled space provides heating and cooling input signals.
- Up to 6 W973 panels can be controlled from one thermostat.
- C7046A secondary sensor located in discharge air duct provides anticipation and a positive economizer modulating low limit signal.
- W974 Heating Setback-Cooling Setup/Shutdown Module can be added to reduce equipment operation and energy consumption when the building is unoccupied.
- W975 Satellite Sequencers can be added to expand the staging capacity to 10 stages of heat and 20 stages of cooling.
- System meets ASHRAE 90-75 guidelines.
- System meets U.S. Department of Defense guidelines.
- W973 is Underwriters Laboratories Inc. component recognized.

LOGIC PANEL



W973A,B,D-H,J

SPECIFICATIONS

THE SPECIFICATIONS GIVEN IN THIS PUBLICATION DO NOT INCLUDE NORMAL MANUFACTURING TOLERANCES, THEREFORE, THIS UNIT MAY NOT MATCH THE LISTED SPECIFICATIONS EXACTLY. ALSO, THIS PRODUCT IS TESTED AND CALIBRATED UNDER CLOSELY CONTROLLED CONDITIONS, AND SOME MINOR DIFFERENCES IN PERFORMANCE CAN BE EXPECTED IF THOSE CONDITIONS ARE CHANGED.

MODELS: W973 Logic Panel — See Table 1.

TABLE 1—W973 LOGIC PANEL MODELS

MODEL	MODULATING ECON. WITH MOD. LOW LIMIT	MODULATING HEATING OUTPUT	MODULATING COOLING OUTPUT	HEATING STAGES ^a	COOLING STAGES ^a
W973A ^b	Yes	No	No	2	2
W973B	Yes	Yes	Yes	3	3
W973D	Yes	No	No	2	4
W973E	Yes	No	No	0	4
W973F	Yes	No	No	4	2
W973G	Yes	No	No	6	2
W973H	Yes	No	No	5	3
W973J ^c	Yes	No	No	4	4

^aW975 Satellite Sequencer can be used to increase number of on-off stages to 10 heat or 10 cool, maximum. See list of additional system components on page 6.

^bW973A1041 provides 4 F [2.2 C] economizer offset. Special scaleplate included.

^cW973J1009 provides load control and heat reclaim.

TABLE 2—W973 RELAY CONTACT RATINGS

CONTACT	VOLTAGE (Vac)	INRUSH (VA)	RUNNING (VA)
Normally Open	24	240	60
Normally Closed	24	75	30
Normally Open	120/240	750	75
Normally Closed	120/240	240	40

ELECTRICAL RATINGS:

Voltage and Frequency—24 Vac, 50/60 Hz.

Maximum Power Consumption—8 VA.

Contact Ratings (spdt pilot duty relays)—see Table VA ratings valid for either N.O. or N.C. contacts (not both) on each relay.

SWITCHING:(on-off stages): Pilot duty spdt relays.

INPUT SIGNAL (from T7067 thermostat): 1 to 16 Vdc.

HEATING-COOLING DEADBAND: 3 F to 30 F [1.7 C to 17 C], provided by T7067 Thermostat.

ECONOMIZER MODULATING LOW LIMIT: Overrides thermostat to modulate economizer motor to minimum position when discharge air temperature falls below 62 F [17 C]. Economizer motor will be at minimum position when discharge air temperature is 50 F [10 C]. Modulating Range—12 F [7 C], from 50 to 62 F [10 C to 17 C].

DISCHARGE SENSOR AUTHORITY: 25:1. (Ratio means that a 25 F [12.5 C] rise in discharge temperature is equivalent to a 1 F [.05 C] rise in space temperature.)

AMBIENT TEMPERATURE RANGE:

Operating—Minus 40 F to plus 150 F [minus 40 C to plus 65 C].

Shipping—Minus 30 F to plus 150 F [minus 34 C to plus 66 C].

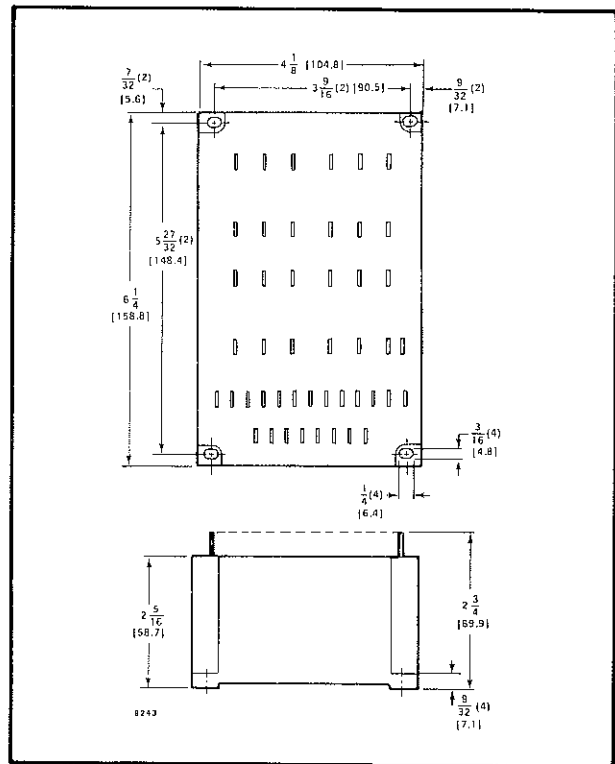


FIG. 1—MOUNTING DIMENSIONS FOR W973 IN in. [mm IN BRACKETS].

MOUNTING: Mounts with four No. 8 screws (not provided) through mounting holes in the base.

DIMENSIONS: See Fig. 1.

UNDERWRITERS LABORATORIES INC. COMPONENT RECOGNIZED: File No. SA481, Guide No. SDFY2.