

# Series 26 Modules Low-Water Cutoff – Plug-In Modules

- ▶ Powered Contacts
- ▶ Modular Plug-In Design
- ▶ Low Voltage Sensor
- ▶ 11-Pin Socket
- ▶ U.L. "Limit Control"
- ▶ Optional Dirty Electrode Detection
- ▶ Optional Manual Reset Button Feature.
- ▶ Optional Power Outage Feature Ignores Nuisance Outages and Resets When Power is Restored
- ▶ Solid State Reliability
- ▶ LED Monitoring
- ▶ Time Delays Available
- ▶ Meets CSD1 Requirements
- ▶ Optional Test Feature

If Level Drops, Control is Deactivated Until Liquid Level Returns to Normal and Pushbutton is Depressed



Series 26M

## Series 26M – General Purpose Control

Series 26M is designed for low-water cutoff protection. This control meets CSD1 requirements for boiler low water cutoff. Series 26M features powered contacts. If non-powered contacts are required, request information on Series 26NM.

### Specifications

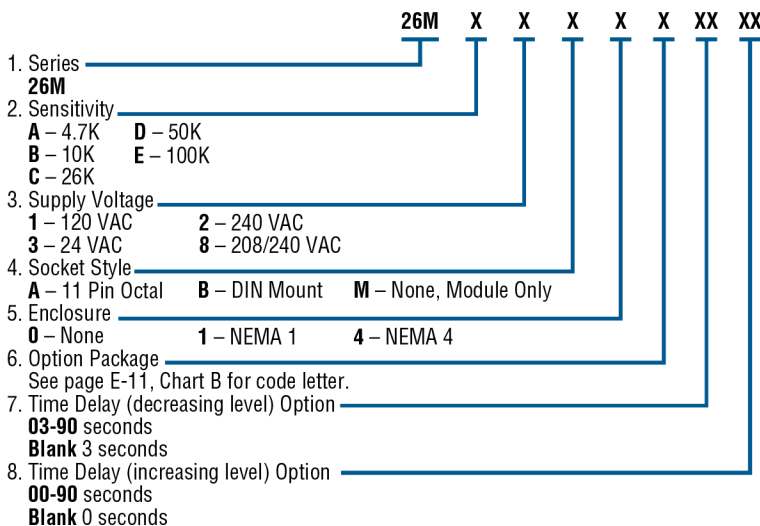
<b>Contact Design</b>	1 N.O. & 1 N.C. (powered)
<b>Contact Rating (24/120/240VAC)</b>	10 amp Resistive 1/3 hp
<b>Mode of Operation</b>	Direct
<b>Sensitivity</b>	0 - 26K ohm, factory set
<b>Primary Voltage</b>	24 VAC, 120 VAC, 240 VAC <sup>1</sup>
<b>Secondary Voltage</b>	12 VAC
<b>Temperature</b>	-40°F to +150°F (-40°C to +65°C)
<b>Approvals<sup>1</sup></b>	U.L. 353 File # MP1430
<b>Terminal Style</b>	Screw connector
<b>Options</b>	Time Delays, Power Outage, Manual Reset, Test Feature, Dirty electrode detection; See page E-11 for descriptions

#### Notes:

1. 240 VAC and 208/240 VAC units do not carry U.L. Limit Control recognition.

### How to Order

Use the **Bold** characters from the chart below to construct a product code.

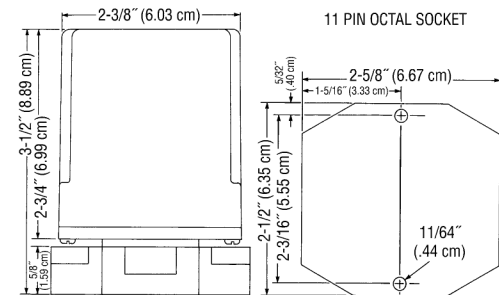


Socket Details and Option Availability are located on web site.

### Applications

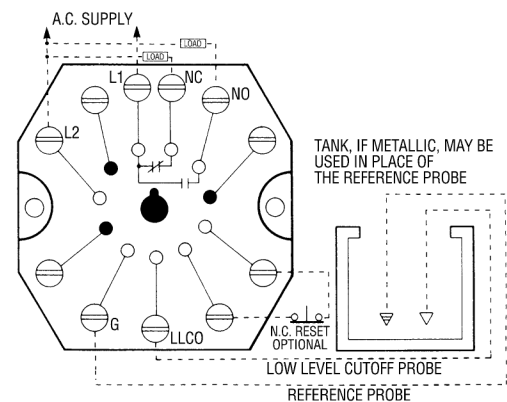
- Low-Water Cutoff
- Point Level
- Alarms

### Dimensions



Note: Controls also available with DIN mount socket.

### Wiring



Caution: Contacts are powered. If non-powered contacts are required, request information on Series 26NM.